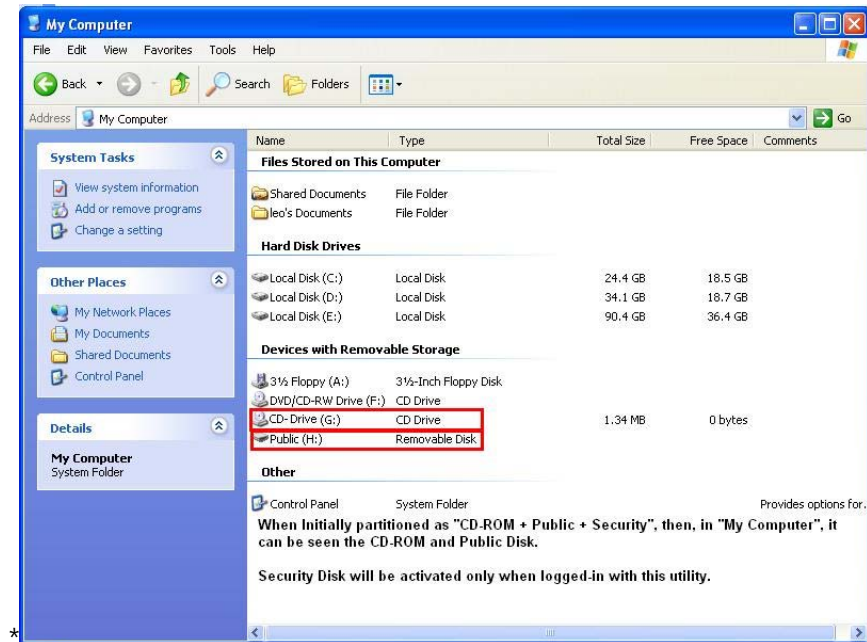
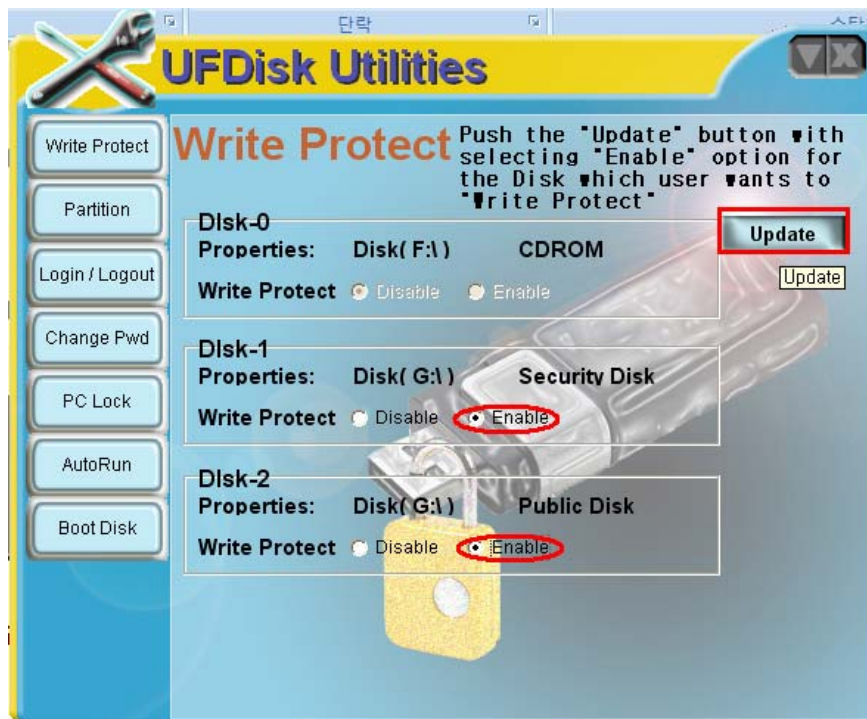


* When initially partitioned as "CD-ROM + Public + Security"



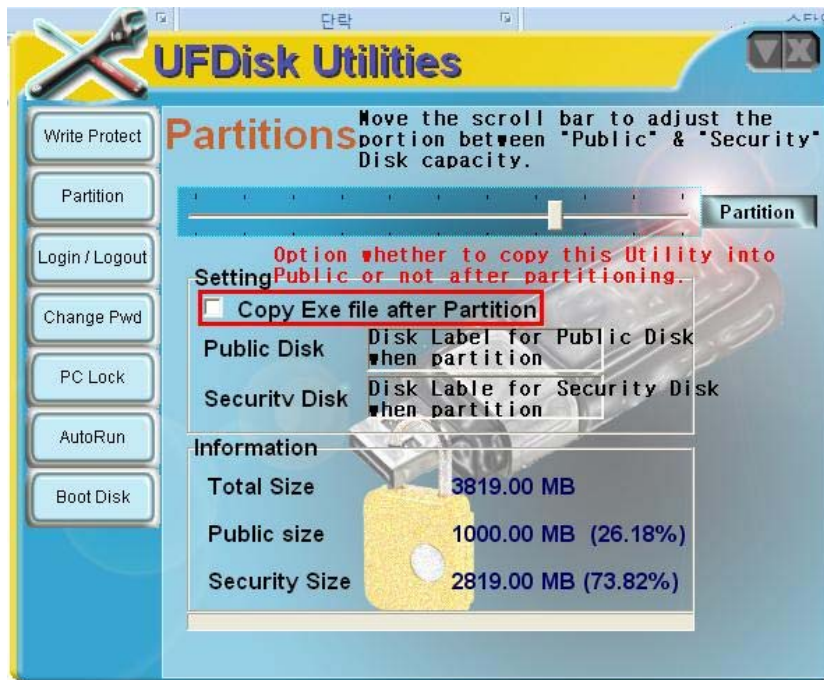
1. Write Protection :



When check the "Enable" option for those Disk which user wants to make "Write Protect" and click the "Update" button, then, it makes those selected Disks as Write Protect". To release "Write Protect", just select "Disable" and "Update", again.

*Note : Above configuration is when CD-ROM Disk is implemented. If there is no CD-ROM Disk, then, only "Public" & "Security" Disk will appear.

2. Partition.



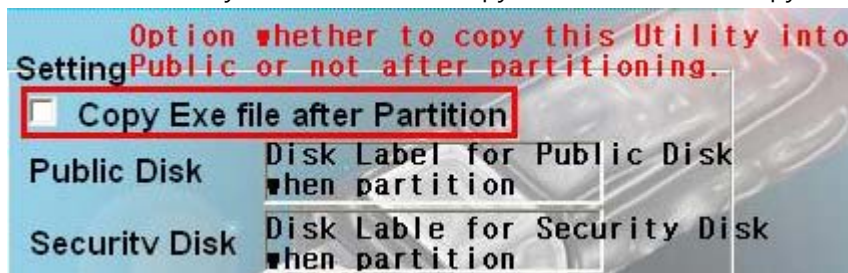
- a. Scroll bar for adjusting capacity portion between "Public" & "Security"



- b. Changed portion is instantly displayed as exact number in "Information" box, as below.



- c. User can select whether to copy this utility into Public or not, when partitioned again with this Utility. If checked, then copy. If not then, don't copy it into (Utility will be lost)



When partition UFD with this Utility again, then, user can put Disk labels for both Public & Security Disk, respectively, as above.

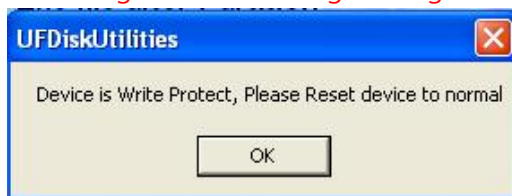
- d. When push the button of **Partition**, then, users are asked to put the default P/W.



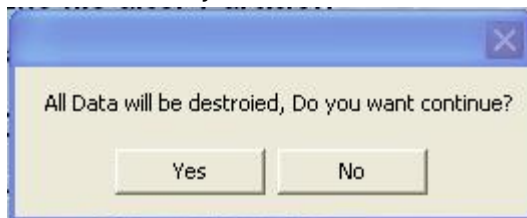
Put the P/W which is provided from UFD maker, as default.

Note : Default P/W should be provided by UFD maker if UFD initially has Public & Security partitions from its release. And this default P/W will be kept until user set new P/W with this Utility.

Note : Partition is disabled if any Disk of Public or Security is "Write Protected" and user will get below warning message.



- e. Then, user will get below warning message for losing all the data in UFD, both in Public & Security.



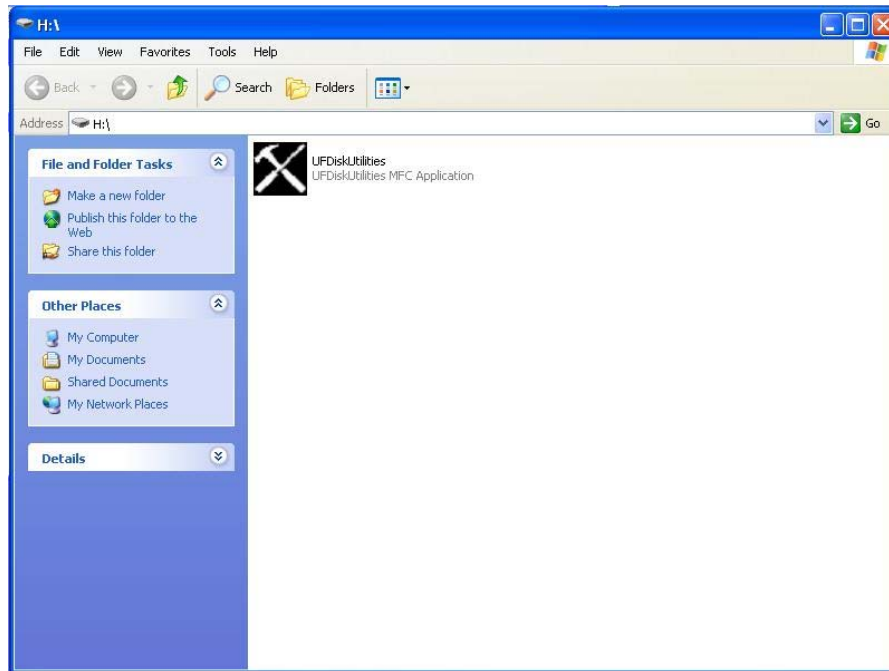
- f. Progress bar will be increased until "Partition" process is done as below.



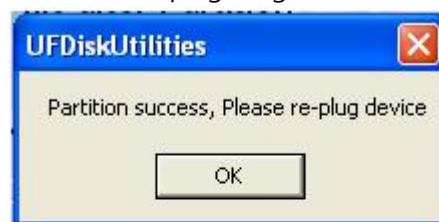
Progress Bar will be increase when pushed the "Partition" button.

- g. After that, CD-ROM contents will be automatically run and Public Disk will be popped-up, as below.

Also, if user selected the "Copy exe file after Partition" menu, then, user can see the Utility was copied into "Public Disk" area, as below.



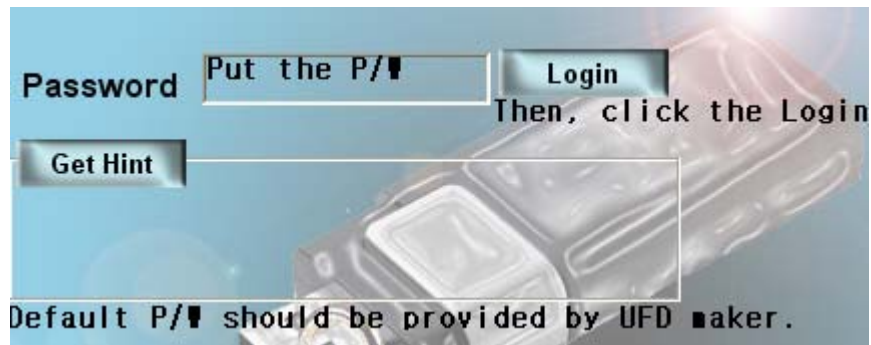
- h. With CD-ROM & Public Disk pop-up, user will get the below message at the same time. Only after CD-ROM(If it is) & Public Disk are popped-up, then, please unplug , click O.K and then, re-plug it again.



Please, do not unplug the UFD, until CD-ROM(If it is) & Public Disk are popped-up!

Only after CD-ROM & Public Disk is popped-up, then, unplug & click O.K and then, re-plug UFD again.

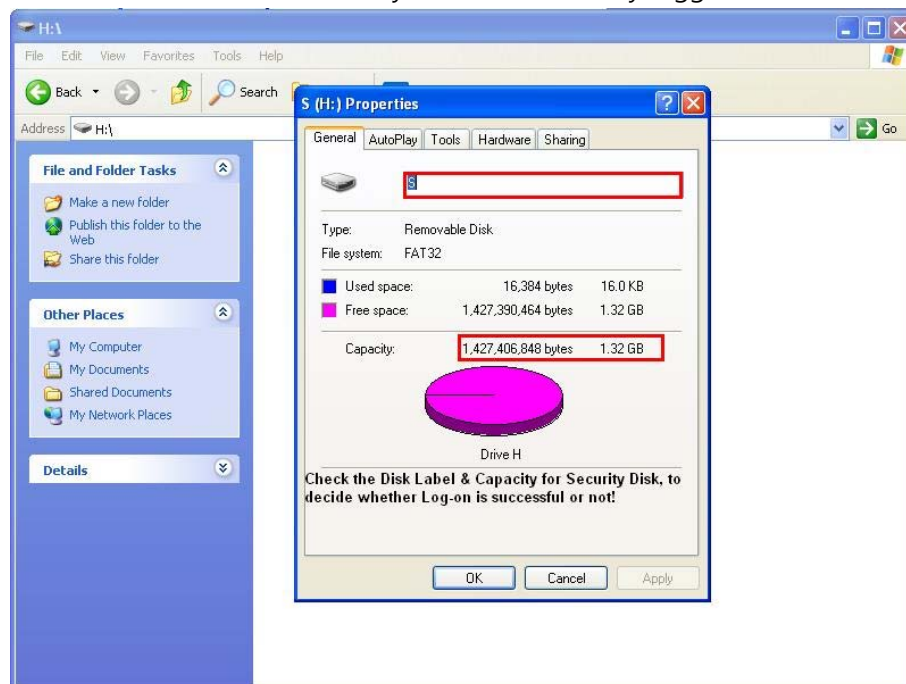
- i. User will get Popping-up of CD-ROM(if it is) & Public Disk, again.
3. Log-in/Log-out.
- a. Default P/W should be provided by UFD maker if UFD is partitioned as Public & Security from its release. User should use the default P/W of above.



- b. Put the default P/W & then, click "Login", then, user will get CD-ROM(If it is) & Security Disk Pop-up, with below message.



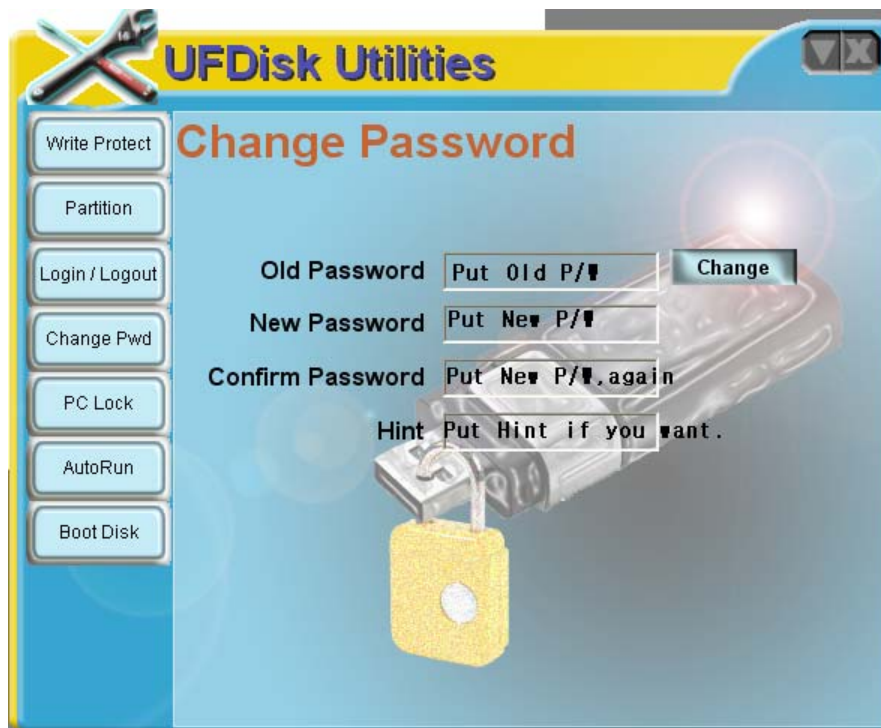
- c. User can check whether Security Disk is successfully logged-on or not, as below.



Note : Auto-run of CD-ROM and Pop-up of Disk(both public or security) is inevitable when user partition or log-in.

4. Change Pwd.

- a. Put Old and new P/W as below picture, respectively.

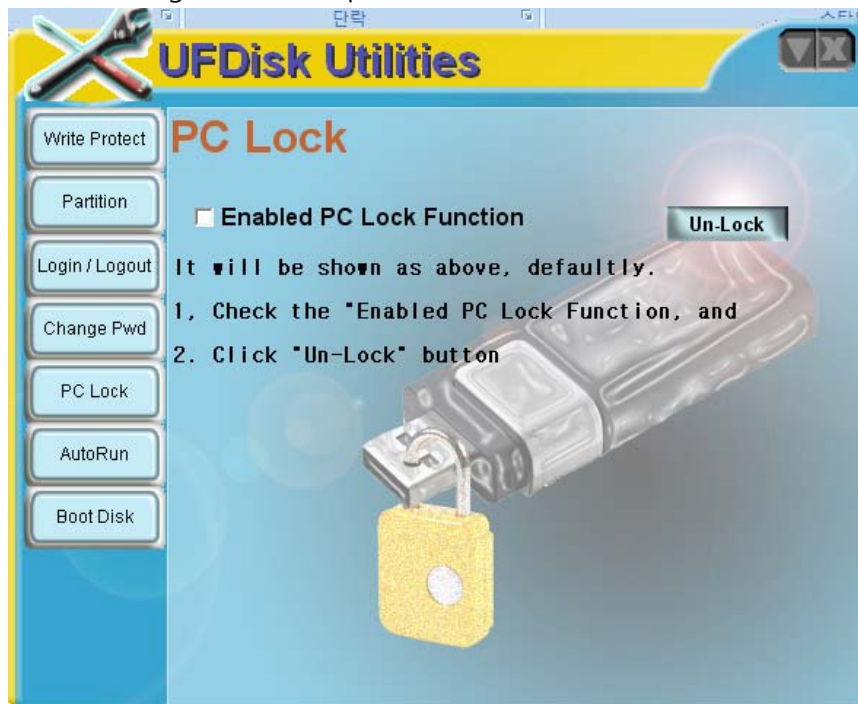


- b. Then, user will get the below message and P/W will be changed as new one.



5. PC Lock.

- a. User will get the below picture when selected "PC-Lock".



- b. After checking the "Enabled PC Lock Function", then, user will get the below picture.(Ie, "Unlock" button will be changed as "Lock")



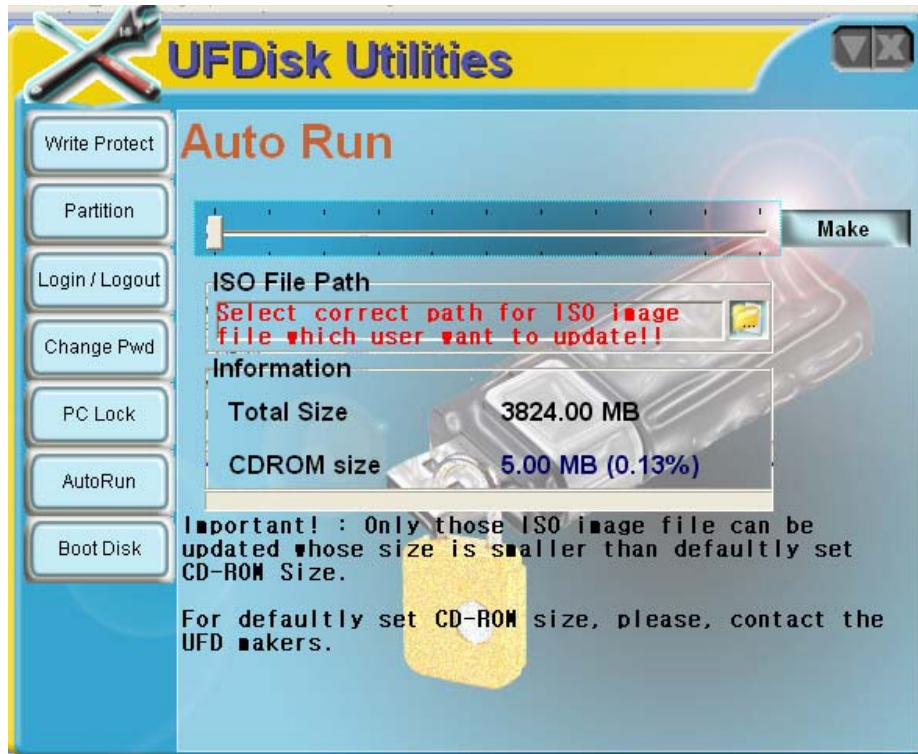
- c. Once "Lock" button is clicked, then, user will get the below message and PC will be locked if UFD is plugged-out!



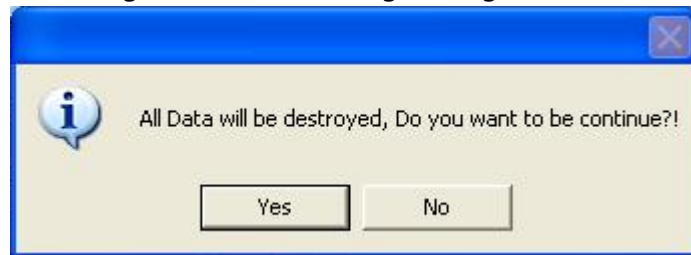
- d. PC will be un-locked only during UFD is plugged-into.
- e. User can release only by below setting, with this Utility.



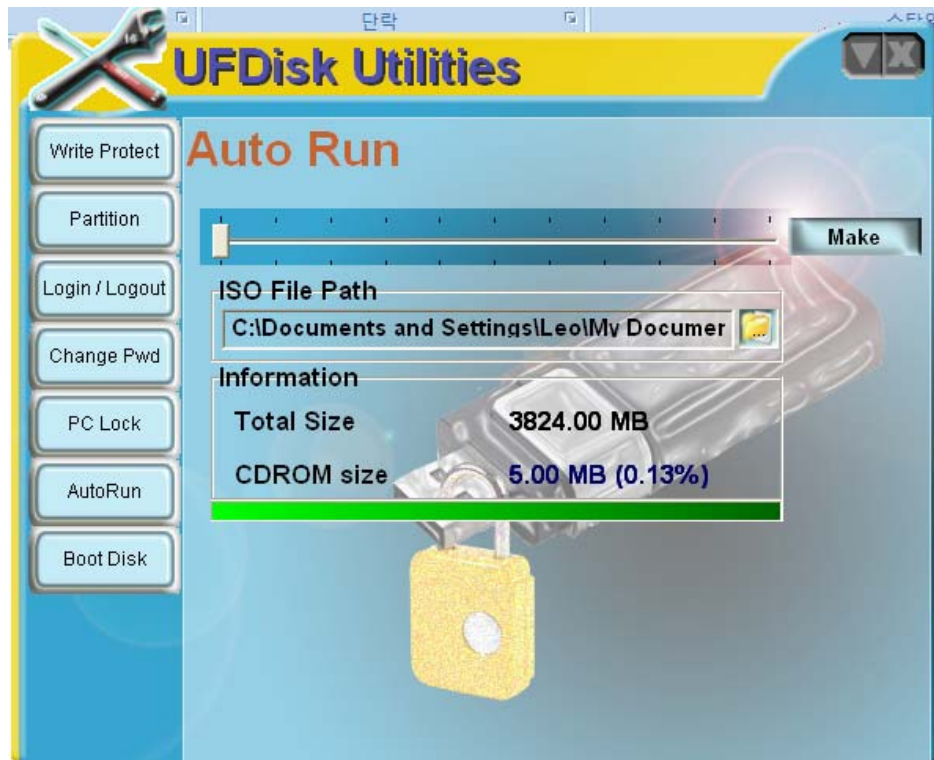
- 6. AutoRun
 - a. Select correct path for ISO Image file which user want to update.
 - b. Click "Make" button.



- c. User will get the below warning message.



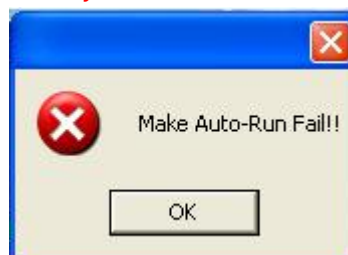
- d. Progress bar will increase until ISO update is done, as below. But there is no message when done the update process.(Don't be confused!)



- e. When done the updates, then, CD-ROM image will be auto-run. But, there will be no any message for process done.

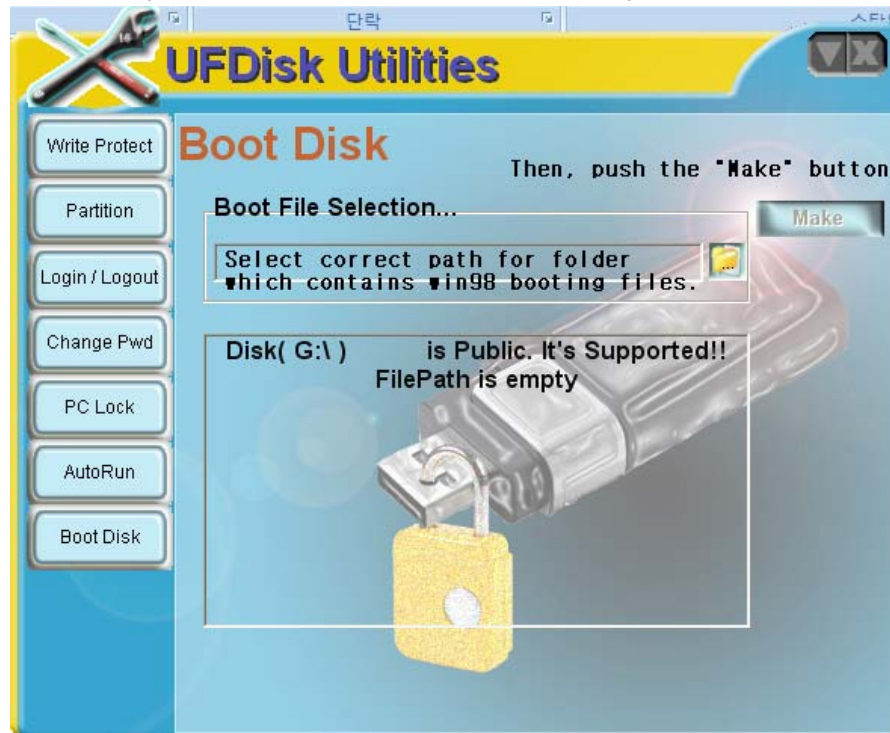
Note : User only can update those ISO image file whose size is smaller than default set CD-ROM size. If ISO file is bigger than default CD-ROM size, then, user will get below fail message.

For the default size, it is those value which initially shown in the menu.(For above case, 5MB is default size of CD-ROM, when it is initially released from UFD maker!).



7. Boot Disk.

- a. Select correct path for boot files of WIN98 and then, push the "Make" button.



- b. User will get below message when done the process.



Note : If Disk is "Write Protected", then, user will get fail message as below.



Note : Make Security Disk area as Bootable is prohibited for integrity of UFD.

And if user tries to make Security area as bootable disk, then, will get comments in main menu of "Boot Disk", as below.

