

Corsair Force Series 3 / Force GT Firmware Update Instructions

Here is the Force Series 3 and Force GT 1.3.3 firmware update. Please read the following before you attempt to update your firmware.

IMPORTANT NOTES BEFORE BEGINNING YOUR UPDATE

If you are stable and do not have issues, we suggest that you do not flash your firmware.

This update is intended to not be destructive. However, we strongly urge that you back up any important data before beginning this procedure.

Be sure to download the correct update file for your drive. Many complaints we have seen were the result of downloading the wrong file for your drive.

This update has been validated for use with Windows 7. It has not been validated with Windows Vista and Windows XP however it may work with these OS's. Users are encouraged to update the drives with either Windows 7 when possible.

This update tool is intended to be run with the drive controller in AHCI mode. If your drive controller is not AHCI enabled and your update fails, you will need to change it to AHCI mode and also enable AHCI in your OS registry. Here is [page](#) with a guide for **ENABLING AHCI**.

If you have issues updating using the Microsoft AHCI driver, you may need to update using the latest driver from your drive controller manufacturer. The reverse is also true. If you have issues updating using the latest drivers from your controller manufacturer, we suggest you try the latest MS AHCI driver.

Our latest testing is only with Intel and AMD drive controllers. The update may not work with 3rd party drive controllers. The update will not work on a controller that is in RAID mode.

If your update fails using a controller other than the Intel or AMD controller, you will need to update using the chipset based drive controller on your motherboard. This applies to SATA2 and SATA3 controllers.

DO NOT at any time power off your system during this procedure.

This may "brick" your drive. After your update if you still have issues, we strongly recommend the following steps:

1. All users should perform a complete clearing of the BIOS after the update.
2. If you have instabilities after the update and step 1 we suggest a secure erase the SSD. For some users, cloning of the drive works, for others it does not. This may be dependent upon the cloning tool used.



Confidential Document.

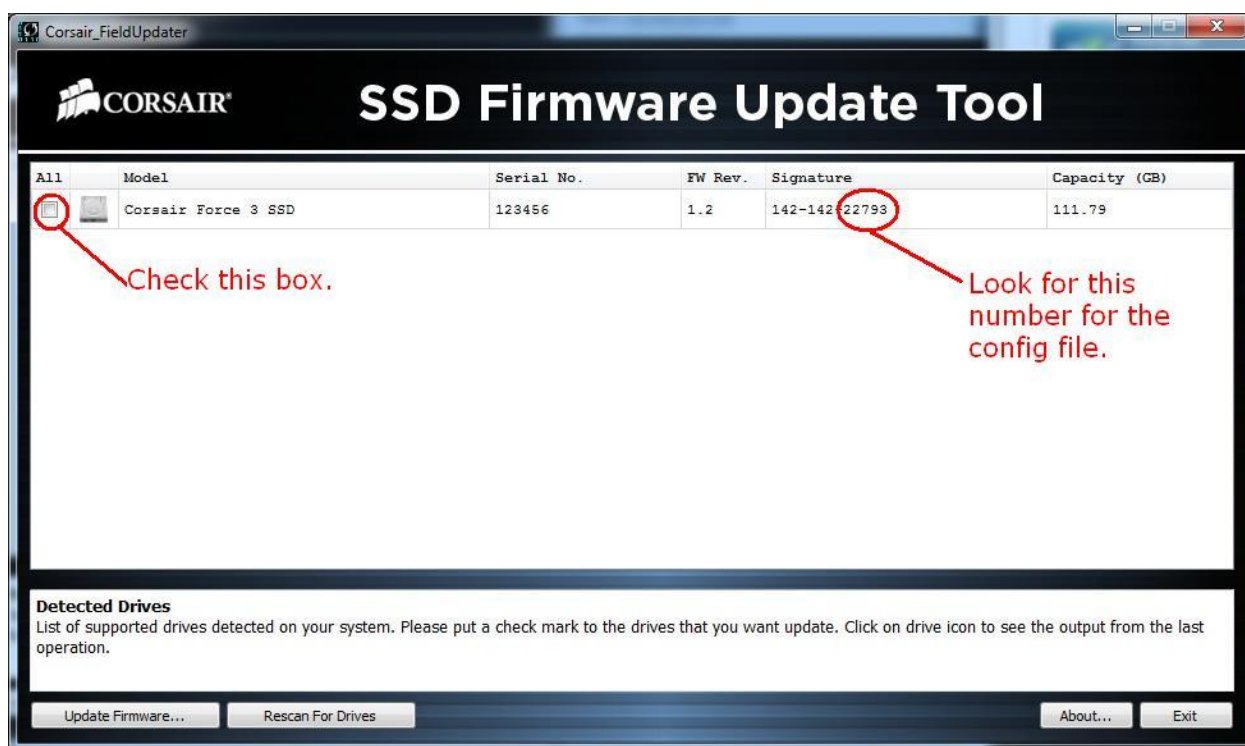
3. A clean installation of the OS if you experience instability after steps 1 and 2 above, a BIOS clearing and secure erase.

UPDATE YOUR BIOS. As always for users with issues, we recommend that you update your motherboard/notebook to the most recent BIOS before attempting to flash your firmware. This may or may not resolve your issue but it is an excellent first step. Quite a few boards/notebooks have been given SSD specific updates over the past few months.

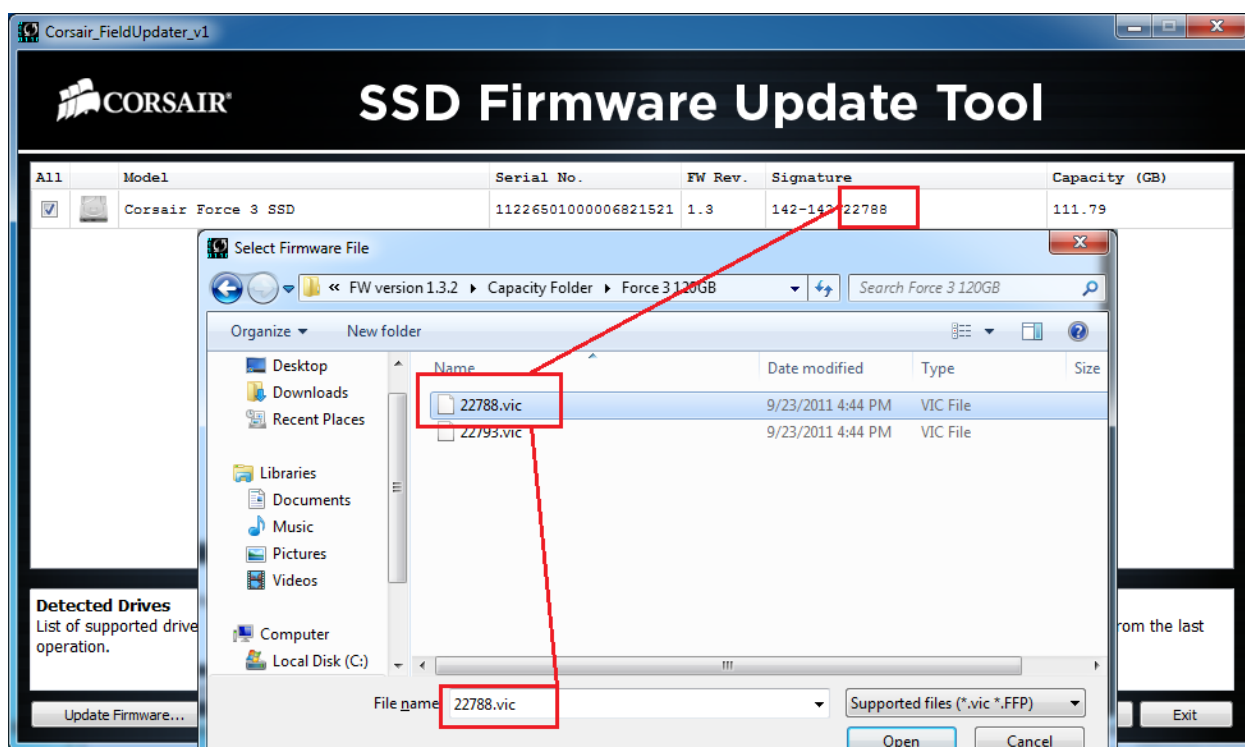
1. Right click the program "Corsair_FieldUpdater_v1.1.exe" and Run as Administrator.



- After “scanning for drives” is done, select the drive(s), if there is more than one drive to update the FW, by clicking the checkbox as shown below. The number for the selecting the correct config file listed under the column “**Signature**” as shown below.



- Click the button “Update Firmware”. Locate the config file matching with the same last five signature numbers (as shown above and below).



- Click open once correct file as been located. A warning window will pop up, click proceed. Once clicked it will start to update the drive. Do not disconnect or interrupt the drive until completely updated!

5. Once complete there should be a green checkmark indicating it has finished on the SSD Image, usually, it takes around 10 seconds.



6. Then, click “Rescan for Drives” button to confirm the FW update is done correctly. Under “FW Rev.” the new version should update from 1.2/ 1.3 to 1.3.2.

