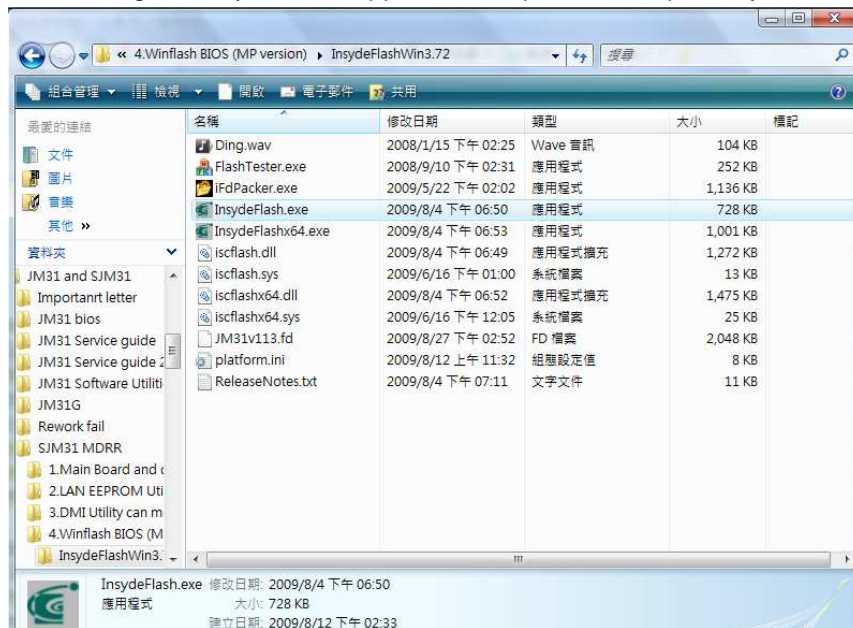
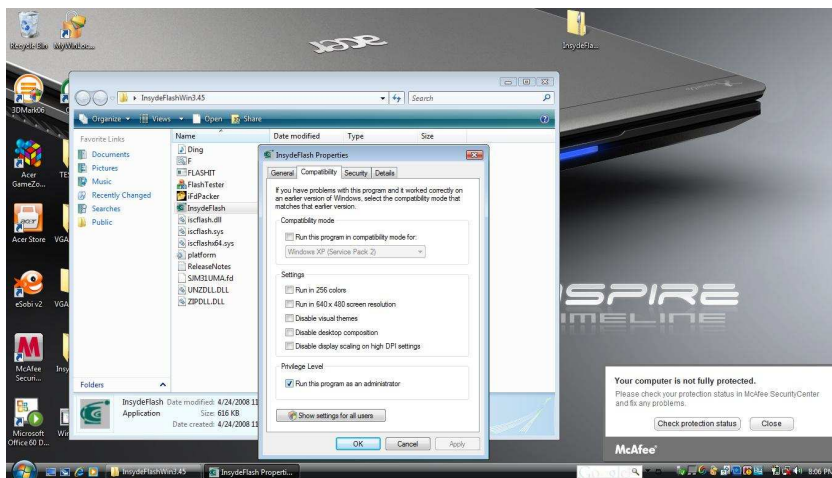


SJM52 Insyde Bios Winflash SOP

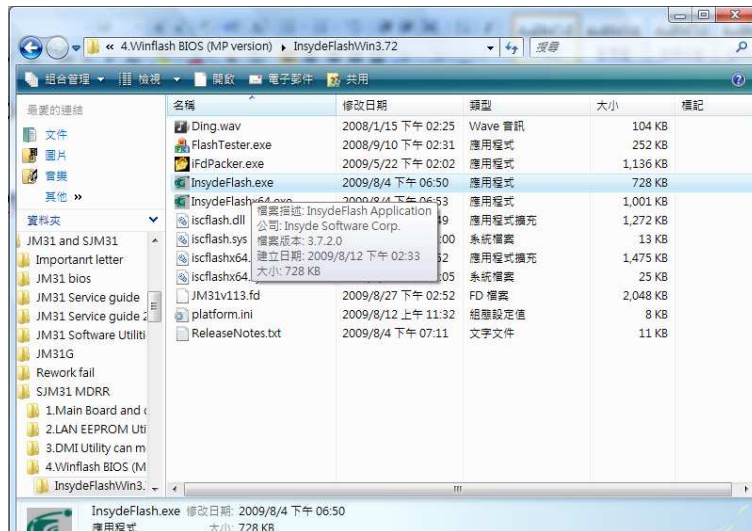
Step 1. Please go to InsydeFlash\Appliaion\Properties\Compatibility



Step2. Please select \Compatibility\Privilege Level \ ☒ Run this program as an administrator.



Step 3. Double click the InsydeFlash.



Step 4. System will ask you are you sure you want to flash bios, please click yes.



Step 5. System will auto flash the bios.

Step 6. SWin-Flash program is running.

✓ Load new BIOS.

✓ Analyze old and new BIOS.

✓ Compatibility.

✓ Read old BIOS..

✓ Save old BIOS to Backup file.

✓ Flash new BIOS.

System BIOS was success update.

Step 7. System will be shut down.

Notice:

1. Please input AC adapter when flash BIOS.
2. Close all application when flash BIOS.