



Printer Driver

Installation Guide

This guide describes installation of the Printer Driver for Windows Vista and Windows XP.

Before Using this Software

Before using the printer driver, be sure to read the “ReadMe” file.

UP-GR700

Table of Contents

Operation Environment Requirements	3
About This Document	3
Installing the Printer Driver in	
Windows Vista	4
Before Installation	4
Installing in Windows Vista	4
Uninstalling the Printer Driver in	
Windows Vista	7
Configuring the Printer in Windows Vista	9
Installing the Printer Driver in Windows XP ...	11
Before Installation	11
Installing in Windows XP	12
Uninstalling the Printer Driver in	
Windows XP	13
Configuring the Printer in Windows XP	14
About the Printable Area	16
Printing One Image	16
Printing Two Images	16
Printing Three Images	17

Microsoft and Windows are registered trademarks of Microsoft Corporation.
Other company names and product names mentioned in this guide are also trademarks and registered trademarks.

Operation Environment Requirements

The system requirements for use of the printer driver are as follows.

- Computer running Microsoft Windows Vista (64-bit edition not supported)
- or
- Computer running Microsoft Windows XP Professional/Home Edition

About USB 2.0

- The UP-GR700 conforms to USB 2.0 specifications.
- USB 2.0 is fully backward compatible with USB 1.1.
- USB 2.0 supports conventional Full (low) speed and Hi-Speed operation.
- In a USB 1.1 environment, connection and operation at Full speed is possible. For Hi-Speed operation, the following requirements must be met.
 - Computer
Computer supporting Hi-Speed USB (USB 2.0 compliant)*
 - Operating system
Microsoft Windows Vista/Microsoft Windows XP Professional/Microsoft Windows XP Home Edition
 - USB 2.0 driver
USB 2.0 device driver produced by Microsoft Corporation (Operation with other USB 2.0 drivers is not guaranteed.)
 - Certified USB 2.0 cable

* Compatibility with all USB 2.0 devices, USB 2.0 expansion boards, or expansion cards cannot be guaranteed.

Note

When the UP-GR700 is connected and turned on, ensure that the computer does not go into sleep, standby (suspended), or hibernation mode. Otherwise correct operation is not assured.

About This Document

The explanation of Control Panel operations in this document assumes that Windows is in Classic View. To switch to Classic View, click [Start], select [Control Panel], and click [Classic View] (for Windows Vista), or [Switch to Classic View] (for Windows XP) in the Control Panel Properties shown on the left side of the screen.

Installing the Printer Driver in Windows Vista


Before Installation

About version upgrades

If you are upgrading a printer driver, remove the previous printer driver before beginning the installation. For details on the procedure to remove the printer driver, refer to the section “Uninstalling the Printer Driver in Windows Vista” in this guide.

If the installation fails or is cancelled, restart your computer before attempting the installation again.

USB 2.0 connection

The UP-GR700 conforms to USB 2.0 specifications. However, if your computer or USB hub is not USB 2.0-compliant, the following message appears when you connect the UP-GR700. Click  to close the message.



Connecting multiple printers

When connecting UP-GR700 printers, you can simply connect the second and subsequent printers to carry out installation automatically.

Note

For installation of subsequent printers, install each printer separately.

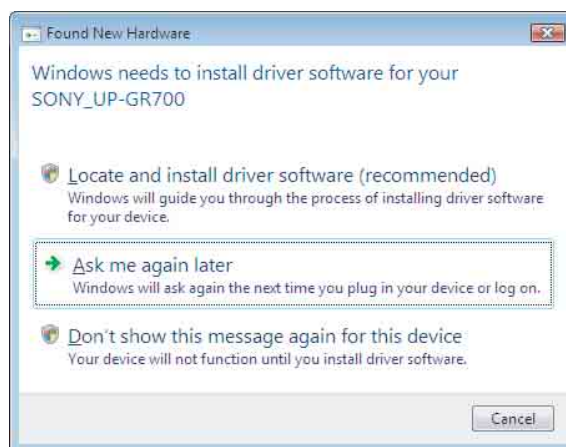
Windows 2000/Windows XP printer driver

As the previous version of the printer driver for Windows 2000/Windows XP is not supported by Windows Vista, proper printing will not be possible if it is installed in Windows Vista. If you installed the Windows 2000/Windows XP version of the printer driver in Windows Vista, follow the steps in the “Uninstalling the Printer Driver in Windows Vista” section of this guide to uninstall the previous driver, and then install this current version of the printer driver supporting Windows Vista.

Installing in Windows Vista

- 1 Connect the UP-GR700 for which you want to install the driver to the computer.
- 2 Turn on the connected UP-GR700.
- 3 Turn on the computer, and log on as the system administrator or a member of the Administrators group.

The [Found New Hardware] dialog box appears.

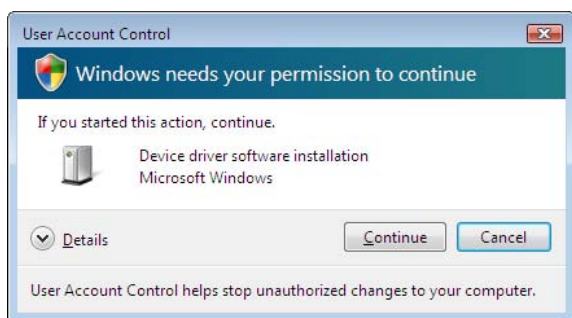


If the [Found New Hardware] dialog box does not appear, perform the steps described below, with the UP-GR700 for which the printer driver is to be installed turned on and connected to the computer. (Any other USB printers or previously installed UP-GR700 printers should not be connected at this time.)

- ① Click [Start] and select [Control Panel].
- ② Double-click [System].
- ③ Click [Device Manager].
The [User Account Control] dialog box appears.
- ④ Click [Continue].
The [Device Manager] window appears.
- ⑤ Click [+] at the left of [Universal Serial Bus controllers].
- ⑥ Select [USB Printing support], and then select [Uninstall] from the [Action] menu.
- ⑦ Restart the computer.
The [Found New Hardware] dialog box appears.

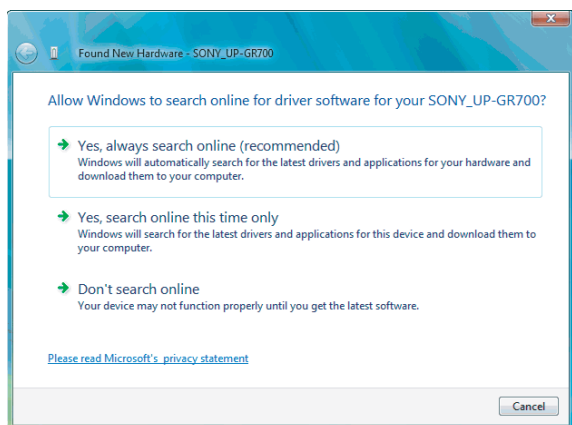
- 4 Click [Locate and install driver software (recommended)].

The following dialog box appears.

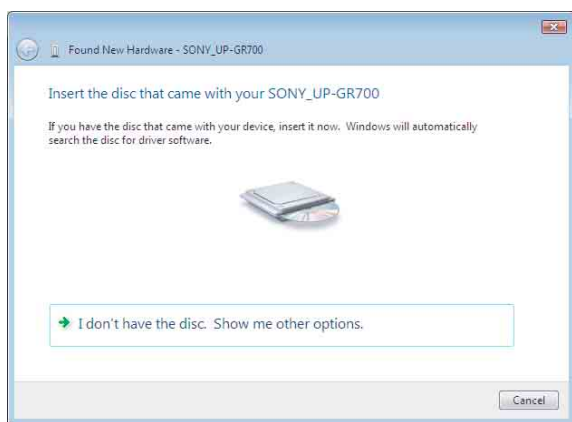


- 5 Click [Continue].

- 6 Click [Don't search online] if the following dialog box appears.



The screen changes as follows.

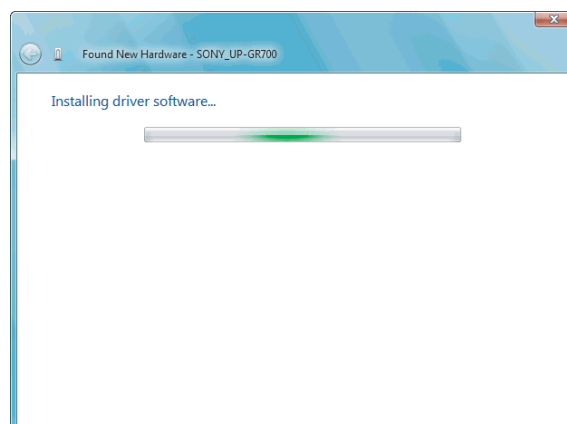


From here, the procedure differs depending on whether you use the supplied CD-ROM or not (if you downloaded the driver online).

Procedure with the supplied CD-ROM

- 7 Insert the supplied CD-ROM into the CD-ROM drive.

The screen changes as follows.

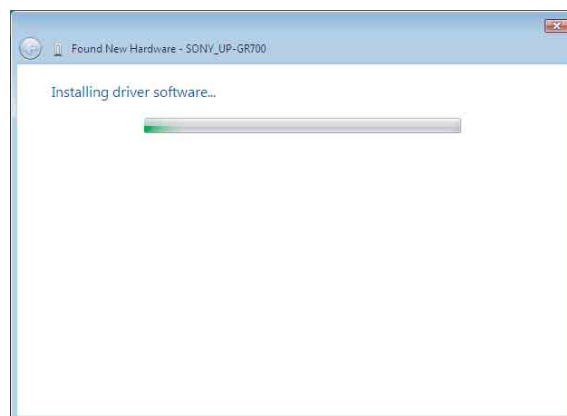


After the search for software is finished, the following dialog box appears.

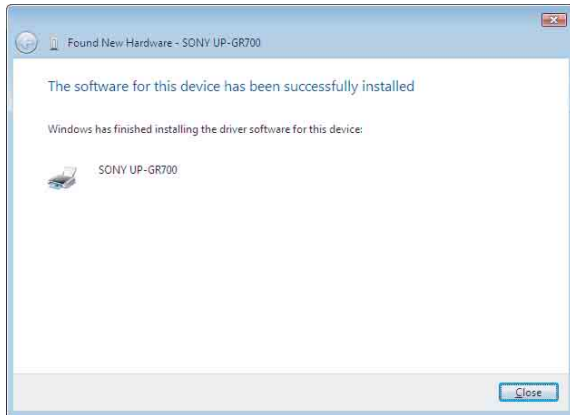


- 8 Click [Install this driver software anyway].

The dialog box closes, and the [Found New Hardware] dialog box reappears.



After the files are copied, the screen changes as follows.



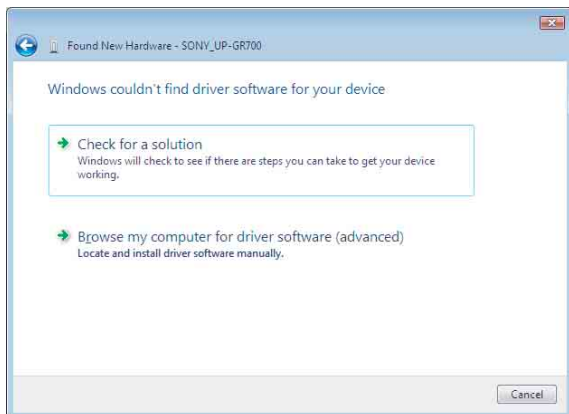
- 9 Click [Close].

This completes installation of the printer driver.

Procedure without the supplied CD-ROM

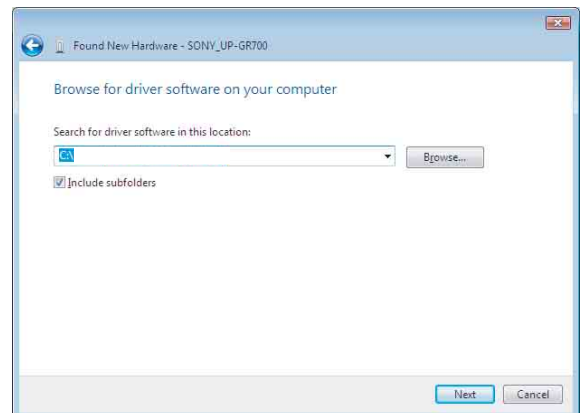
- 7 Click [I don't have the disc. Show me other options].

The screen changes as follows.



- 8 Click [Browse my computer for driver software (advanced)].

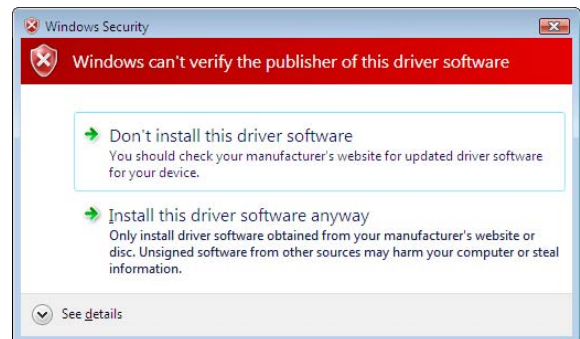
The screen changes as follows.



- 9 Click [Browse] to open the [Browse For Folder] dialog box. Specify the folder in which the installation file you downloaded was extracted, and then click [OK] to close the [Browse For Folder] dialog box.

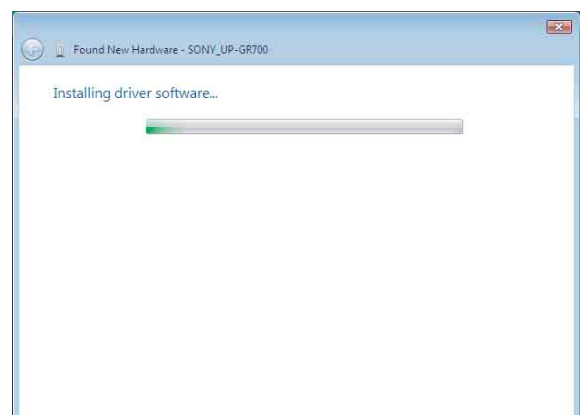
- 10 Click [Next].

The following dialog box appears.

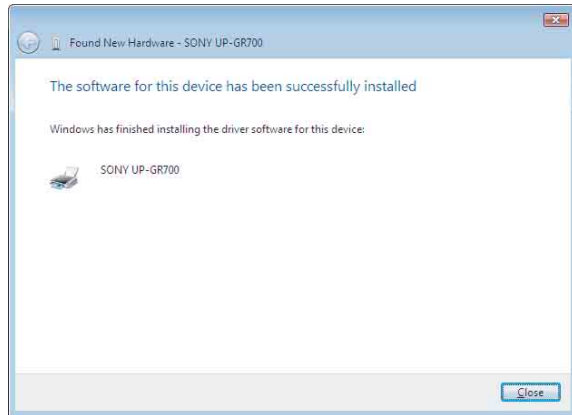


- 11 Click [Install this driver software anyway].

The dialog box closes, and the [Found New Hardware] dialog box reappears.



After the files are copied, the screen changes as follows.



12 Click [Close].

This completes installation of the printer driver.

Uninstalling the Printer Driver in Windows Vista

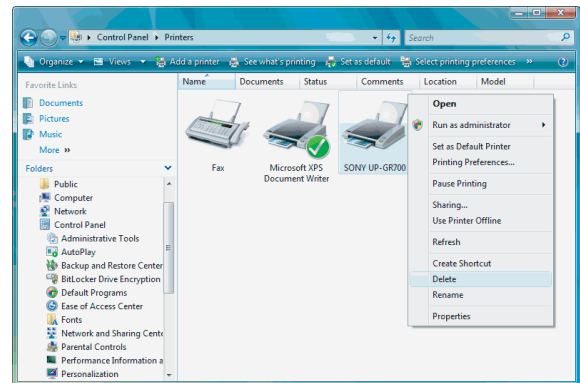
This section describes how to remove the printer driver.

Notes

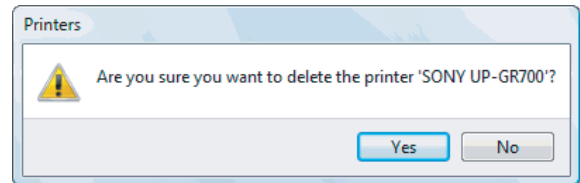
- When starting the uninstallation procedure, the UP-GR700 should not be connected to the computer. If the [Found New Hardware] dialog box appears, disconnect the cable between the computer and UP-GR700, click [Cancel] on all screens to close the dialog box, and then start the uninstallation procedure once more.
- If multiple instances of the printer driver are installed on your computer when you perform uninstallation, the printer drivers (printer icons) for all of the UP-GR700 you are using will be uninstalled.

1 Click [Start], select [Control Panel], and then select [Printers].

2 Right-click the name of the printer you want deleted to display an option menu, and then click [Delete].

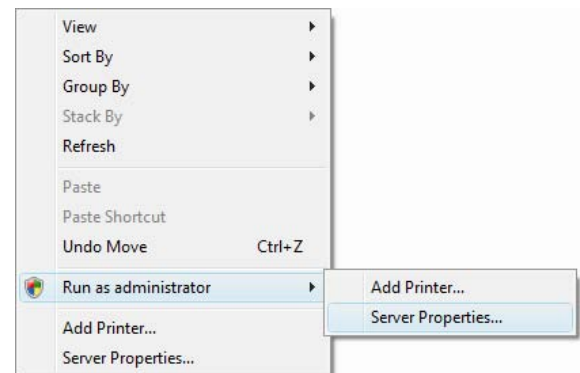


The following dialog box appears.

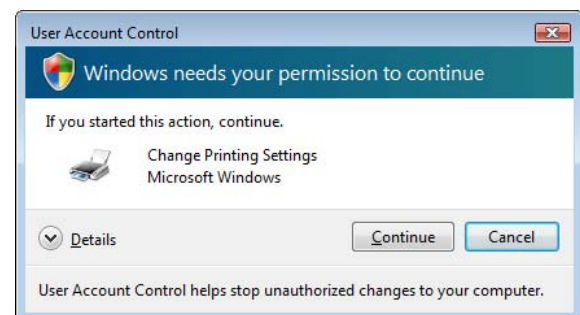


3 Click [Yes].

4 Right-click any area within the window (except the printer icons) to display an option menu, select [Run as administrator], and then click [Server Properties].



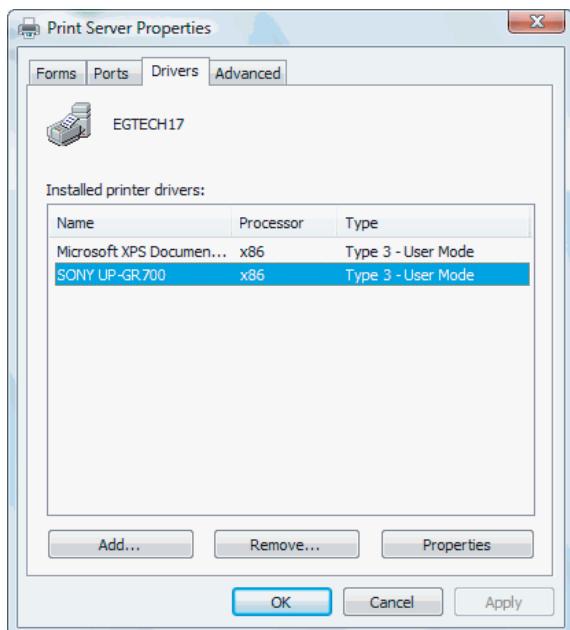
The following dialog box appears.



5 Click [Continue].

The print server properties appear.

- 6 Click the [Drivers] tab, select the name of the printer you want to delete from the [Installed printer drivers] list, and then click [Remove].

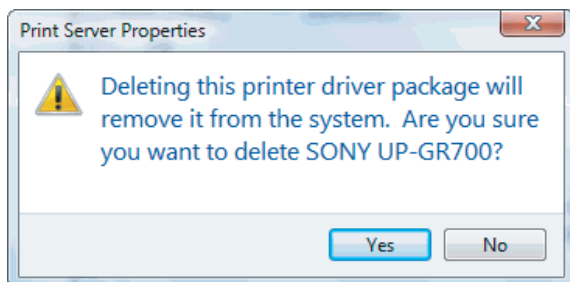


The [Remove Driver And Package] screen appears.



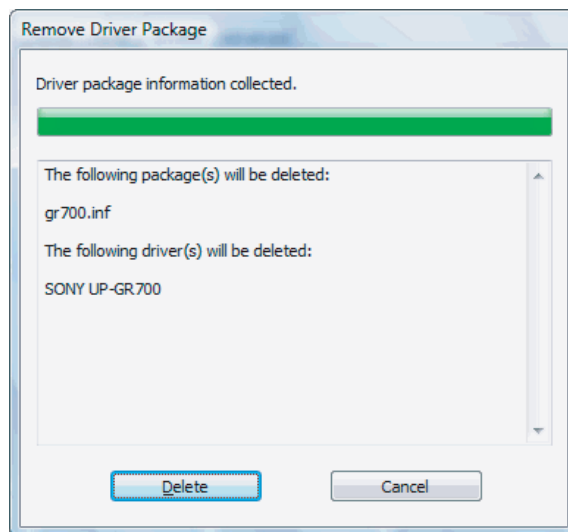
- 7 Select [Remove driver and driver package], and then click [OK].

The following dialog box appears.



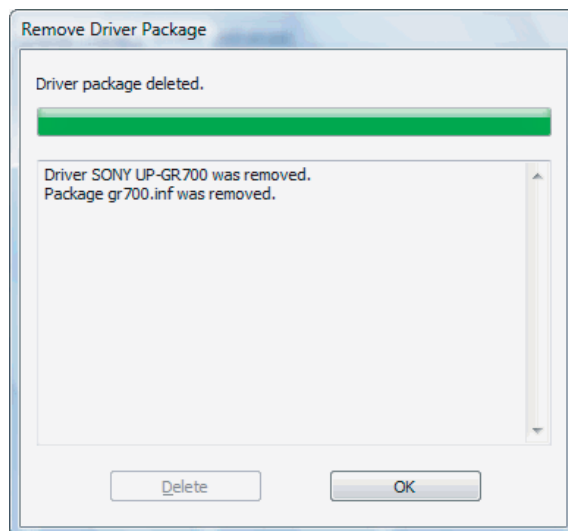
- 8 Click [Yes].

The following dialog box appears.



- 9 Click [Delete].

The screen changes as follows.



- 10 Click [OK] to close the screen.

Note

The warning [The specified printer driver is currently in use] may appear. If this message appears, restart your computer and perform the uninstall procedure again.

Configuring the Printer in Windows Vista

Before printing from an application, you should make the required printer properties settings.

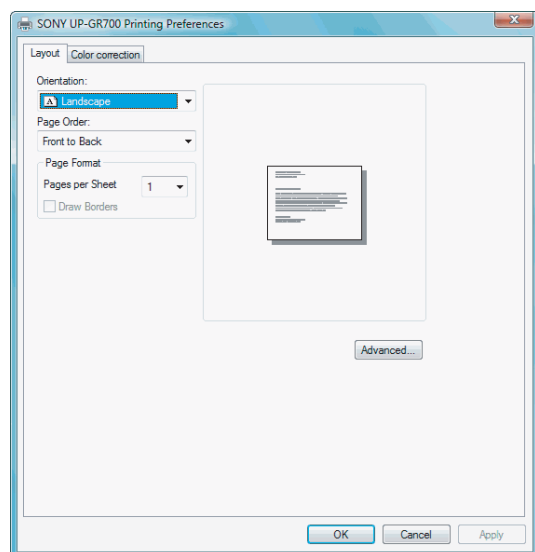
To call up the printer properties window, use one of the following methods:

- Click [Start] and then [Control Panel]. Select [Printers]. Select the UP-GR700 printer icon, then click [Select printing preferences] on the toolbar. Settings made in this way are used as default settings when printing from applications.
- On the [File] menu of your application, click the item for making printer settings. Settings made in this way only remain valid until you close the application.

This section describes the settings available under the tabs in [UP-GR700 Printing Preferences].

[Layout] Tab

This tab is used for making basic printing settings.



Orientation

Select [Portrait] or [Landscape].

Page Order

Select [Front to Back] or [Back to Front] for the printing order.

Pages Per Sheet

Select the number of pages to print on each sheet.

Draw Borders

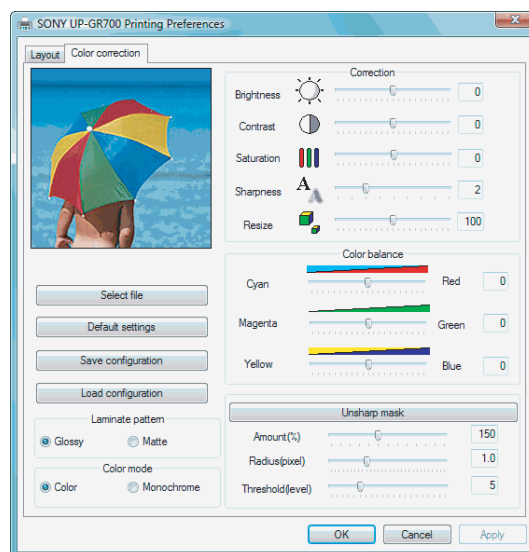
Enabled when [Pages per Sheet] is set to 2 or more. Click this if borders need to be drawn for pages.

Advanced

Click to display the [Advanced Options] window.

[Color correction] Tab

This tab is used for making color, brightness, and other image related settings.



Select file

Click to select the image that appears in the upper left corner of the window.

Notes

- For image format, only 24-bit full-color bitmap files can be selected. Image size is not limited.
- The window displays a 256 × 256-dot area from the center of the selected image.

Default settings

Click to return all modified settings on the [Color correction] tab to their default values.

Save configuration

Click to save the configuration of the [Color correction] tab as a file.

Load configuration

Click to restore a saved configuration for the [Color correction] tab.

Laminate pattern

Select [Glossy] or [Matte] for the lamination finish.

Color mode

Select [Color] or [Monochrome] for the color mode.

Correction

Make adjustments to the image.

Adjust the items (Brightness, Contrast, Saturation, Sharpness, and Resize) by moving the respective sliders left or right. You can also directly enter values in the input fields.

Color balance

Adjust the items by moving the respective sliders left or right. You can also directly enter values in the input fields.

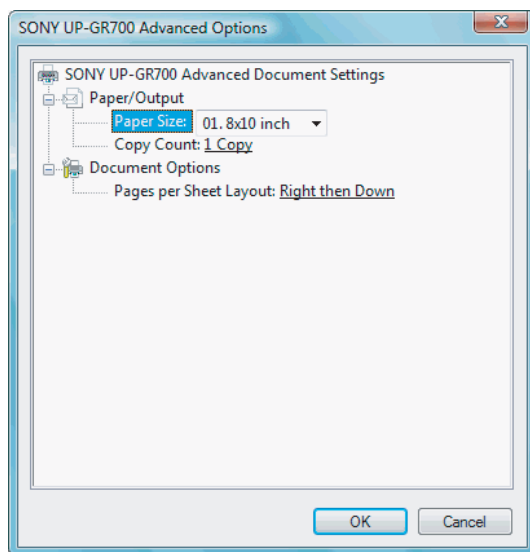
Unsharp mask

Click to enable/disable the unsharp mask.

When the unsharp mask is enabled, adjust the items (Amount, Radius, and Threshold) by moving the respective sliders left or right. You can also directly enter values in the input fields.

[Advanced Options] Window

This window is used for making document settings such as paper size, copy count and pages per sheet layout.



Paper Size

Select [01. 8×10 inch], [02. 8×12 inch], [03. 8×8 inch], [04. 8×5 inch×2], [05. 8×6 inch×2] or [06. 8×4 inch×3] as the paper size for printing.

Note

If either [05. 8×6 inch×2] or [06. 8×4 inch×3] is chosen, the actual size printed will be approximately 8×5.9 inch×2 and 8×3.87 inch×3 respectively.

Copy Count

Click to set the number of copies to print, between 1 and 20.

Collated

Set whether document pages are collated or printed separately when printing multiple copies.

This item is only enabled when [Copy Count] is set between 2 and 20.

Pages per Sheet Layout

Select [Right then Down], [Down then Right], [Left then Down], or [Down then Left] as the layout of the pages to be printed.

Installing the Printer Driver in Windows XP

Before Installation

About version upgrades


If you are upgrading a printer driver, remove the previous printer driver before beginning the installation. For details on the procedure to remove the printer driver, refer to the section “Uninstalling the Printer Driver in Windows XP” in this guide.

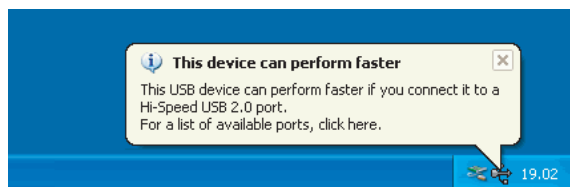
If the installation fails or is cancelled, restart your computer before attempting the installation again.

Note

Be sure to restart your computer after installing or uninstalling the printer driver. Unless you reboot, unstable operation may result.

USB 2.0 connection

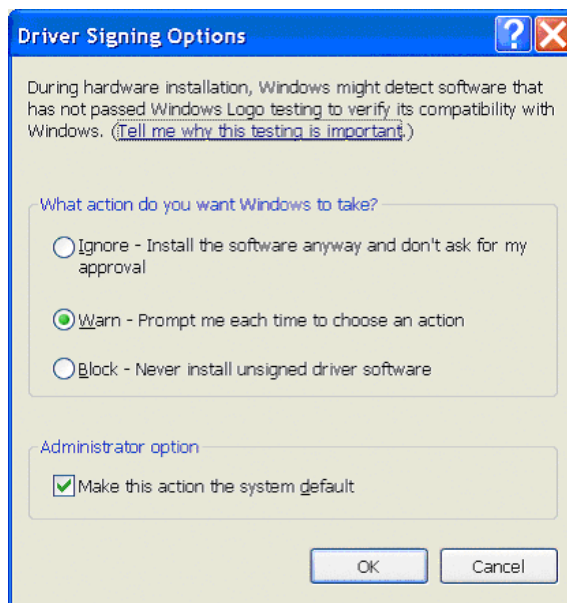
The UP-GR700 is compatible with USB 2.0. However, if your computer or USB hub is not USB 2.0-compliant, the following message appears when you connect the UP-GR700 printer. Click  to close the message.



About Driver Signing Options

The present printer driver has not passed Windows Logo testing, therefore when you install the driver an error message may appear, preventing you from installing the driver.

In the [Driver Signing Options] dialog box, select [Ignore] or [Warn] in the [What action do you want Windows to take?] group box. If you select [Block], you cannot install the printer driver.



Open the [Driver Signing Options] dialog box as follows:

- ① On the [Start] menu, click [Control Panel].
- ② Double-click [System].
The [System Properties] dialog box appears.
- ③ Click the [Hardware] tab.
- ④ Click the [Driver Signing] button.

All the explanations in this guide assume that the setting in this dialog box is [Warn].

Connecting multiple printers

When several UP-GR700 printers are connected to a computer running Windows XP, install the printer driver for each printer according to the explanation in “Installing in Windows XP”.

Note

For installation of subsequent printers, install each printer separately.

Installing in Windows XP

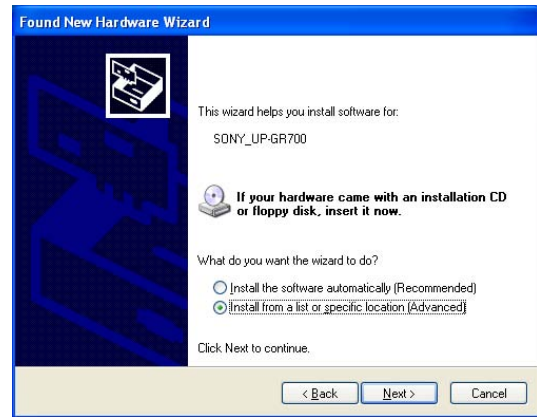
- 1 Connect the UP-GR700 printer (one only) for which the driver is to be installed to the computer.
- 2 Turn power to the connected UP-GR700 printer on.
- 3 Turn power to the computer on, and log on as the system administrator or a member of the Administrators group.

The [Found New Hardware Wizard] appears.



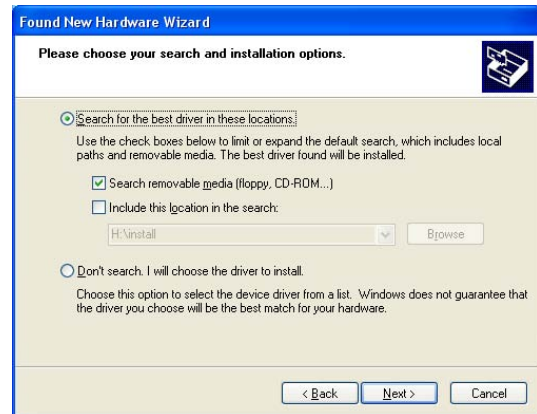
- If the [Found New Hardware Wizard] screen looks like that shown in step 3, proceed to step 4.
- If the [Found New Hardware Wizard] screen looks different from that shown in step 3, proceed to step 5.
- If the [Found New Hardware Wizard] screen does not appear, perform the steps described below, with the UP-GR700 printer for which the printer driver is to be installed turned on and connected to the computer. (Any other USB printers or previously installed UP-GR700 printers should not be connected at this time.)
 - ① Click [Start] and select [Control Panel].
 - ② Double-click [System].
The [System Properties] dialog box appears.
 - ③ Click the [Hardware] tab.
 - ④ Click [Device Manager].
The [Device Manager] window appears.
 - ⑤ Click [+] at the left of [Universal Serial Bus controllers].
 - ⑥ Right-click [USB Printing Support], and open the Properties. Confirm that [UP-GR700] is selected for [Location], and then select [Uninstall] from the [Action] menu.
 - ⑦ Restart the computer.
The [Found New Hardware Wizard] appears.

- 4 Click [No, not this time] and click [Next].



- 5 Select [Install from a list or specific location (Advanced)], and then click [Next].

The screen changes as follows.



- 6 Select [Search for the best driver in these locations], select [Search removable media (floppy, CD-ROM)], and then insert the supplied CD-ROM "PRINTER DRIVER & INSTRUCTIONS FOR USE UP-GR700" into the CD-ROM drive.
- 7 Click [Next].

The following dialog box appears.



8 Click [Continue Anyway].

After the files are copied, the following screen appears.



9 Click [Finish].

10 Restart the computer.

This completes the installation of the printer driver.

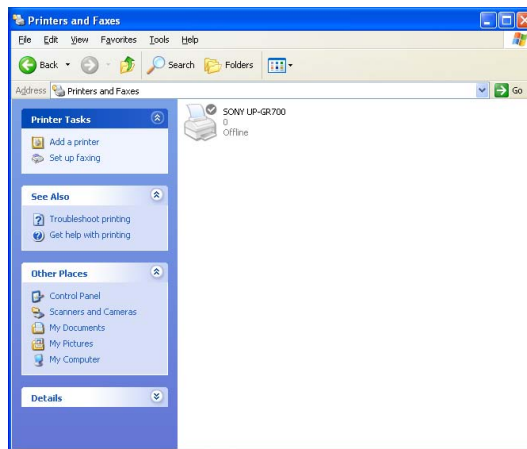
Uninstalling the Printer Driver in Windows XP

This section describes how to remove the printer driver.

Notes

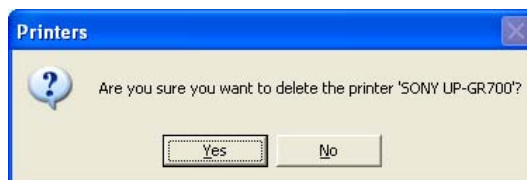
- When starting the uninstallation procedure, the UP-GR700 should not be connected to the computer. If the [Found New Hardware Wizard] screen appears, disconnect the cable between the computer and UP-GR700, click [Cancel] on all screens to terminate the wizard, and then start the uninstallation procedure once more.
- If the uninstallation procedure is carried out with multiple instances of the printer driver installed, all drivers for UP-GR700 printers (printer icons) will be uninstalled.
- If the warning “The specified printer driver is currently in use.” appears, restart the computer and perform the uninstallation procedure again.

- 1 Turn power to the UP-GR700 printer off and disconnect the cable between the computer and printer.
- 2 Turn power to the computer on, and log on as the system administrator or a member of the Administrators group.
- 3 Click [Start] and select [Control Panel]. Then select [Printers and Faxes].



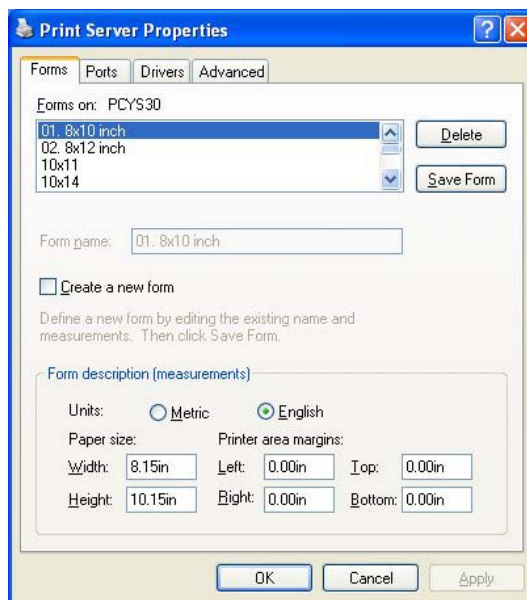
- 4 Select the name of the printer to delete, and then select [Delete] from the [File] menu.

The following dialog box appears.



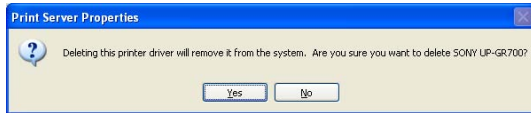
- 5 Click [Yes].
- 6 Select [Server Properties] from the [File] menu.

The [Print Server Properties] window appears.



- 7 Click the [Drivers] tab, select the name of the printer to delete from the [Installed Printer Drivers] list, and then click [Remove].

The following dialog box appears.



- 8 Click [Yes].
- 9 Click [OK] on the [Print Server Properties] window.

This completes the printer driver uninstallation procedure.

Configuring the Printer in Windows XP

Before printing from an application, you should make the required printer properties settings.

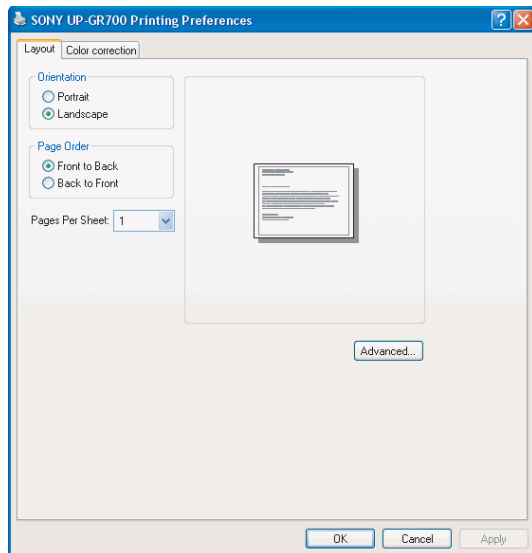
To call up the printer properties window, use one of the following methods:

- Click [Start] and then [Control Panel]. Select [Printers and Faxes]. Select the UP-GR700 printer icon, then click [Printing Preferences] on the [File] menu. Settings made in this way are used as default settings when printing from applications.
- On the [File] menu of your application, click the item for making printer settings. Settings made in this way only remain valid until you close the application.

This section describes the settings available under the tabs in [UP-GR700 Document Properties].

[Layout] Tab

This tab is used for making basic printing settings.



Orientation

Select [Portrait] or [Landscape].

Page Order

Select [Front to Back] or [Back to Front] for the printing order.

Pages Per Sheet

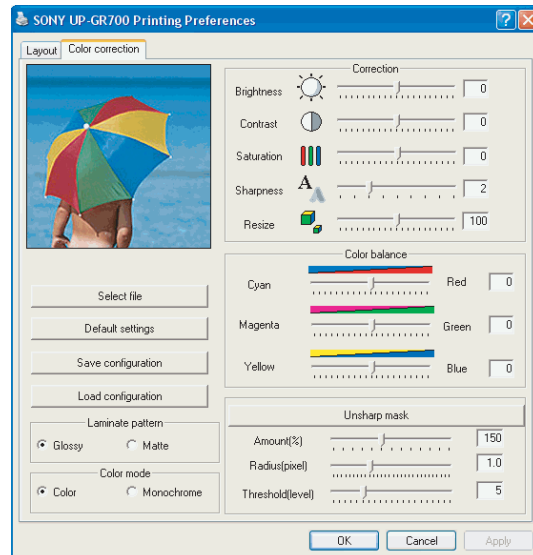
Select the number of pages to print on each sheet.

Advanced

Click to display the [Advanced Options] window.

[Color correction] Tab

This tab is used for making color, brightness, and other image related settings.



Select file

Click to select the image that appears in the upper left corner of the window.

Notes

- For image format, only 24-bit full-color bitmap files can be selected. Image size is not limited.
- The window displays a 256 × 256-dot area from the center of the selected image.

Default settings

Click to return all modified settings on the [Color correction] tab to their default values.

Save configuration

Click to save the configuration of the [Color correction] tab as a file.

Load configuration

Click to restore a saved configuration for the [Color correction] tab.

Laminate pattern

Select [Glossy] or [Matte] for the lamination finish.

Color mode

Select [Color] or [Monochrome] for the color mode.

Correction

Make adjustments to the image.

Adjust the items (Brightness, Contrast, Saturation, Sharpness, and Resize) by moving the respective sliders left or right. You can also directly enter values in the input fields.

Color balance

Adjust the items by moving the respective sliders left or right. You can also directly enter values in the input fields.

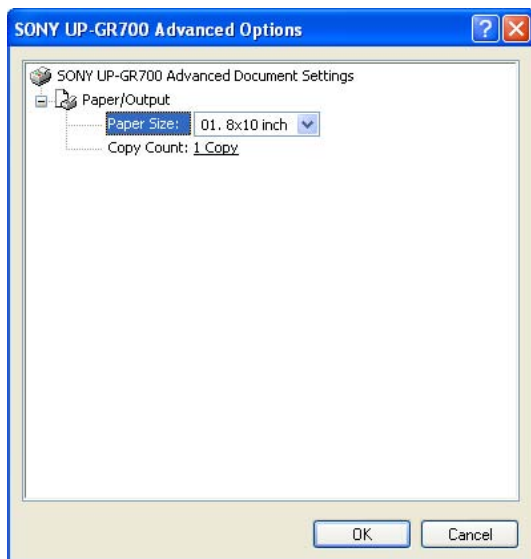
Unsharp mask

Click to enable/disable the unsharp mask.

When the unsharp mask is enabled, adjust the items (Amount, Radius, and Threshold) by moving the respective sliders left or right. You can also directly enter values in the input fields.

[Advanced Options] Window

This window is used for making document settings such as paper size and copy count.



Paper Size

Select [01. 8×10 inch], [02. 8×12 inch], [03. 8×8 inch], [04. 8×5 inch×2], [05. 8×6 inch×2] or [06. 8×4 inch×3] as the paper size for printing.

Note

If either [05. 8×6 inch×2] or [06. 8×4 inch×3] is chosen, the actual size printed will be approximately 8×5.9 inch×2 and 8×3.87 inch×3 respectively.

Copy Count

Click to set the number of copies to print, between 1 and 20.

Collated

Set whether document pages are collated or printed separately when printing multiple copies.

This item is only enabled when [Copy Count] is set between 2 and 20.

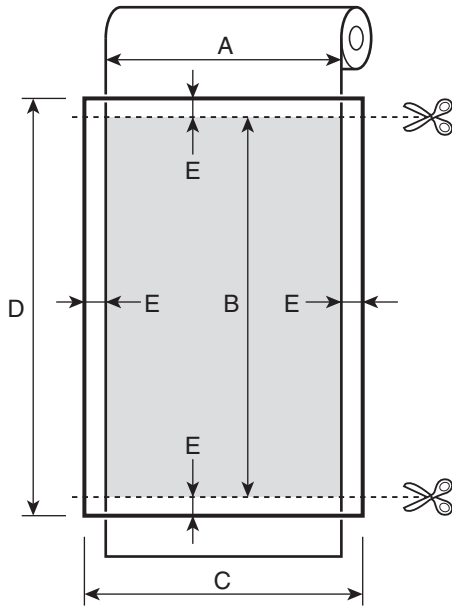
About the Printable Area

When you print with UP-GR700, the surrounding area of the image data will be decreased by approximately 1.9 mm (22 dots). Prepare the image to be printed in such a way so that there will be allowance for the area to be removed.

For printing two or three images, you will need to align those images and prepare them as one image data.

Printing One Image

Prints one image. If you print using this method, set the image to the size (C × D) as shown in the figure/table below. The actual size to be printed will be A × B.



A/B/C/D: Refer to the table.

E : 22 dots

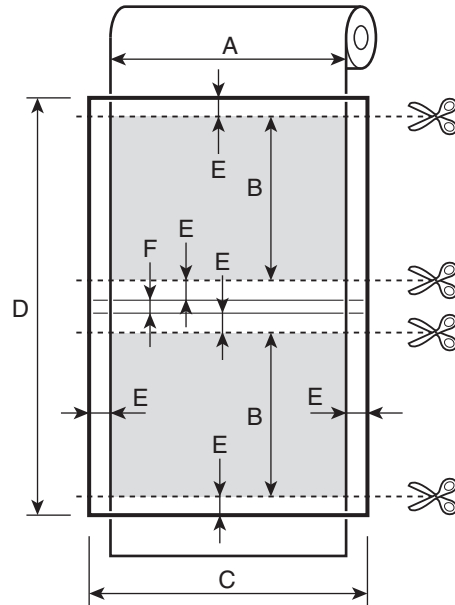
Paper Size Setting	Picture size (A × B)	Image size (C × D)
[01. 8×10 inch]	203 × 254 mm (8 × 10 inches) (2400 × 3000 dots)	2444 × 3044 dots
[02. 8×12 inch]	203 × 305 mm (8 × 12 inches) (2400 × 3600 dots)	2444 × 3644 dots
[03. 8×8 inch]	203 × 203 mm (8 × 8 inches) (2400 × 2400 dots)	2444 × 2444 dots

Printing Two Images

Prints two images at once. You will need to align the two images and prepare them as one image data. Set the image to the size (C × D) as shown in the figure/table below. The actual size to be printed will be A × B.

Note

Blank spaces (16 dots) are required between each image (shown by F in the figure). Nothing will be printed even if there are data in the spaces.



A/B/C/D: Refer to the table.

E : 22 dots

F : 16 dots

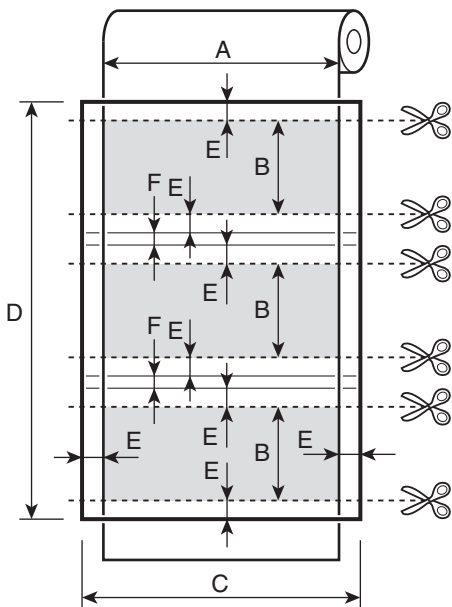
Paper Size Setting	Picture size (A × B)	Image size (C × D)
[04. 8×5 inch×2]	203 × 127 mm (8 × 5 inches) (2400 × 1500 dots)	2444 × 3104 dots
[05. 8×6 inch×2]	203 × 150 mm (8 × 5.9 inches) (2400 × 1770 dots)	2444 × 3644 dots

Printing Three Images

Prints three images at once. You will need to align the three images and prepare them as one image data. Set the image to the size (C × D) as shown in the figure/table below. The actual size to be printed will be A × B.

Note

Blank spaces (16 dots) are required between each image (shown by F in the figure). Nothing will be printed even if there are data in the spaces.



A/B/C/D: Refer to the table.

E : 22 dots
F : 16 dots

Paper Size Setting	Picture size (A × B)	Image size (C × D)
[06. 8×4 inch×3]	203 × 98 mm (8 × 3.87 inches) (2400 × 1160 dots)	2444 × 3644 dots