

How to update my drive?

This manual shows you
how to update your
external drive.

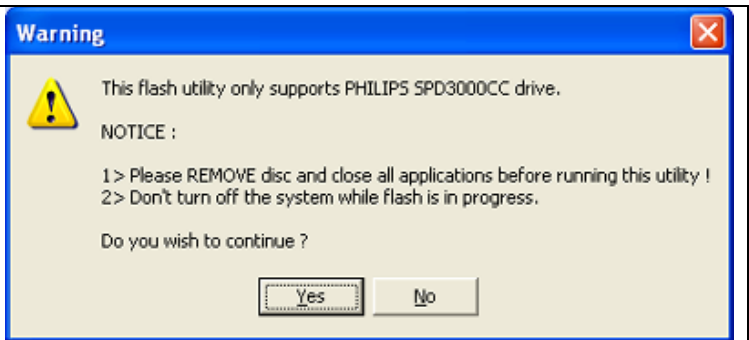


Philips Consumer Electronics
Version 03

PHILIPS

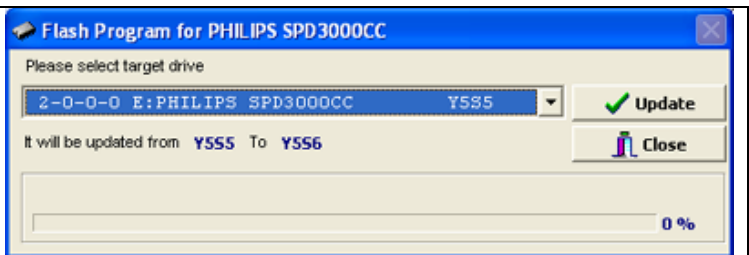
1

Start the Update Tool you downloaded.
Click "Yes"



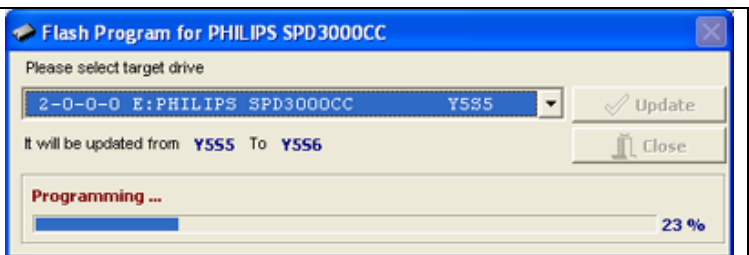
2

Choose the drive to update and click "Update".



3

Your drive is being updated.
Do not interact with the system.



4

Your drive has been updated.
Click "OK" to exit the update program.

