

How to upgrade my drive?

This manual shows you how to upgrade your drive with the Philips ReWriter Upgrade tool version 3.7.2.7.

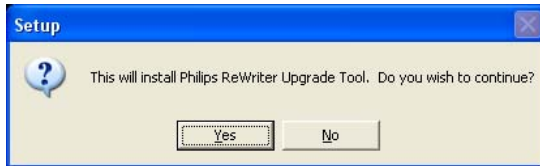


Philips Consumer Electronics
Version 03

PHILIPS

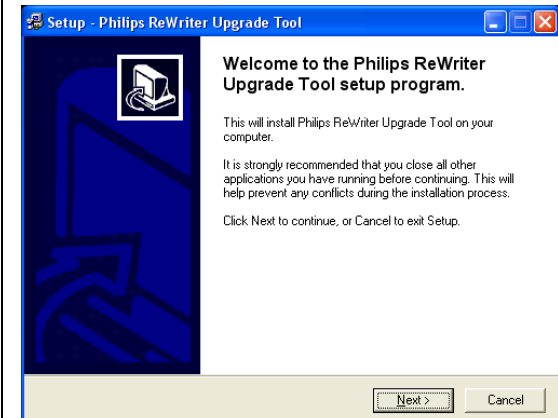
1

Start the Philips ReWriter Upgrade Tool you downloaded.
Click "Yes"



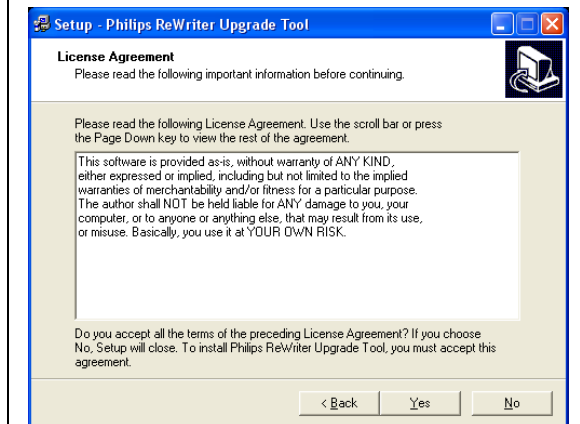
2

Click "Next"



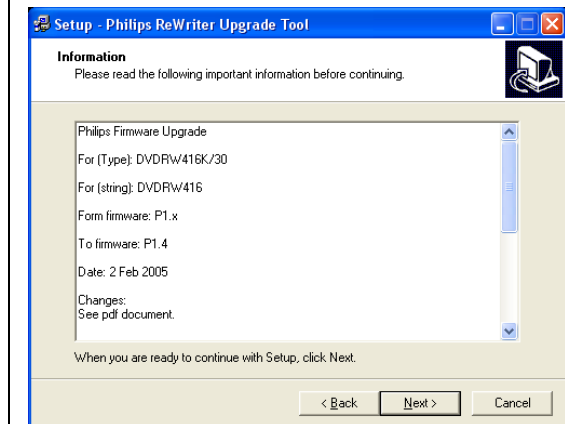
3

Click "Yes"



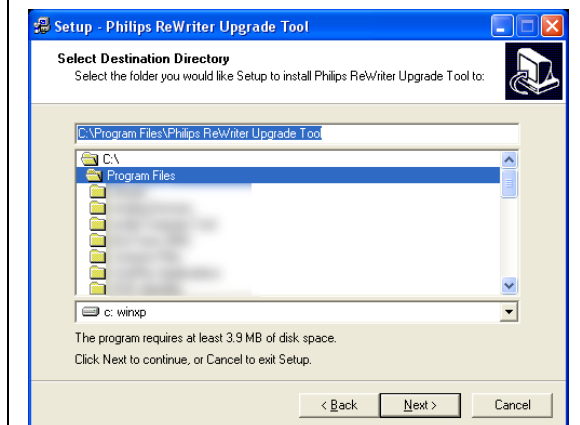
4

Click "Next"



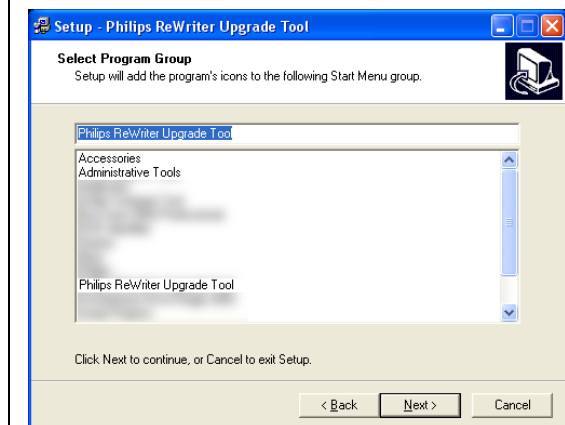
5

Click "Next"

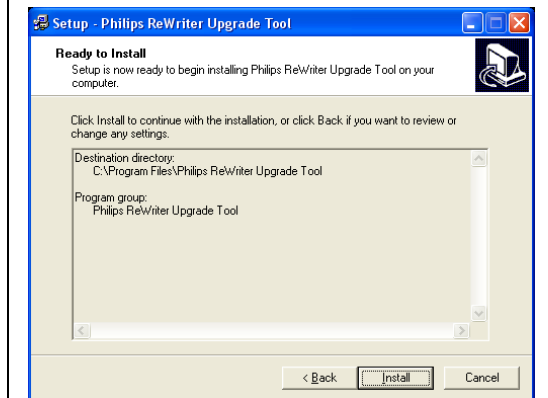


6

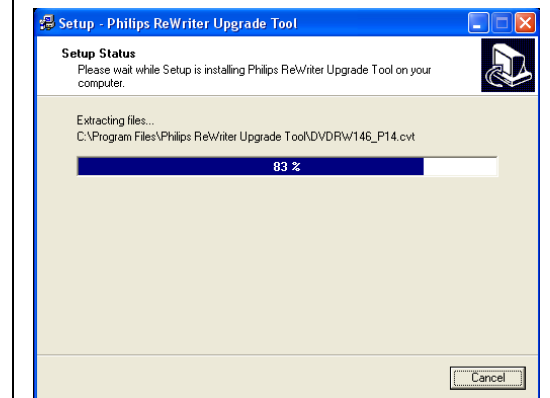
Click "Next"



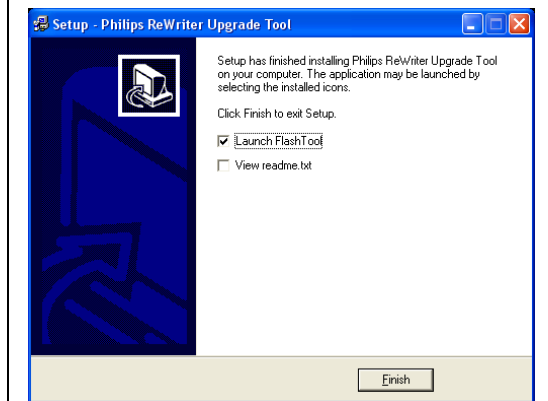
7 Click "Install"



8 Wait while the Upgrade tool is installed.



9 Click "Finish"

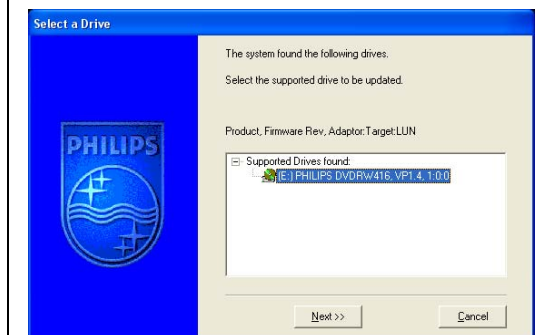


10 Click "Next".



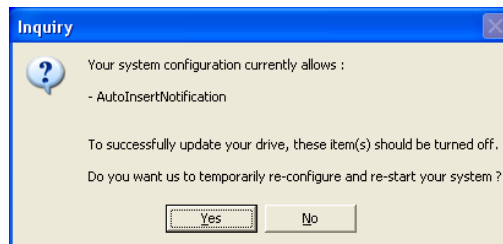
11 Choose the drive that should be upgraded and click "Next".

When your drive is "not supported", you downloaded the wrong upgrade.

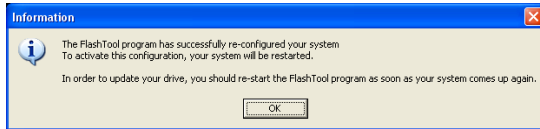


12 In some cases, you may be asked to allow the "AutoInsertNotification" to be switched off. Allow to do so by clicking "Yes".

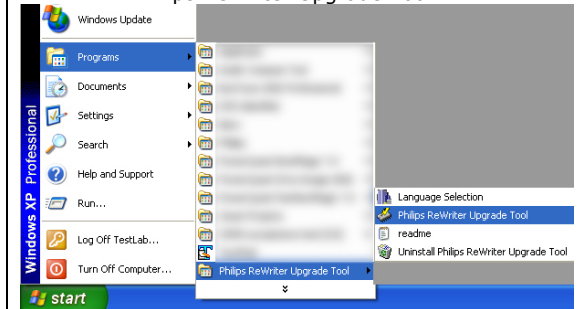
If this does not show, go to step 17.



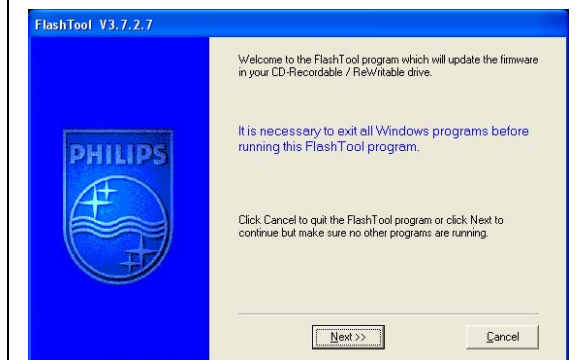
13 Click "OK"



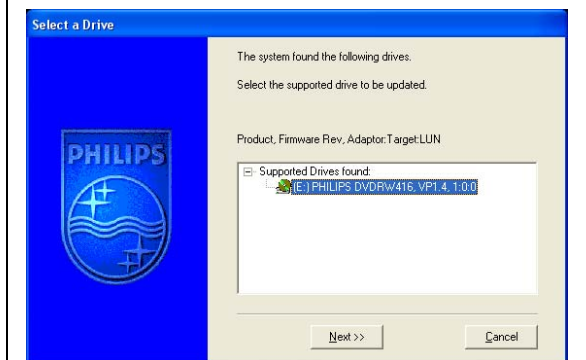
14 After rebooting, click "Start" "Program Files" "Philips ReWriter Upgrade Tool" "Philips ReWriter Upgrade Tool"



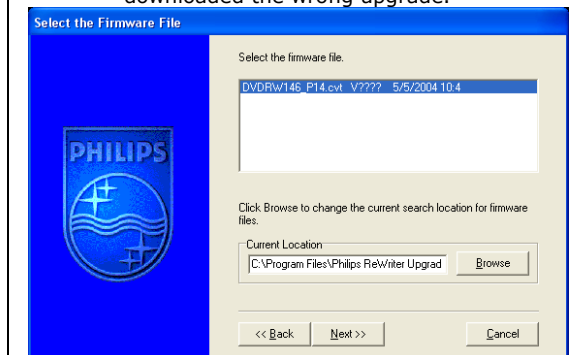
15 Click "Next"



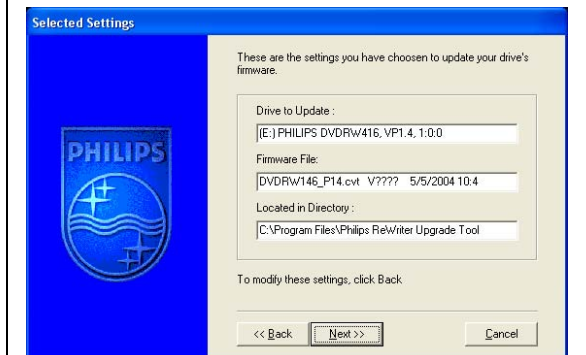
16 Choose the drive that should be upgraded and click "Next".



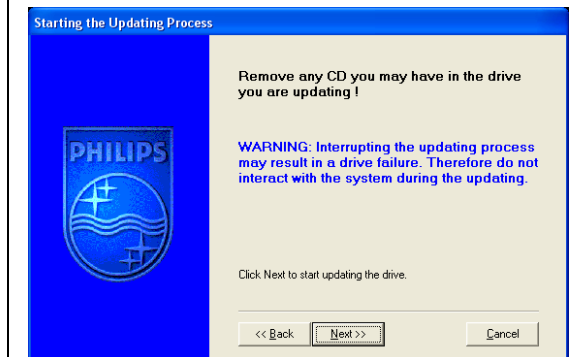
17 Click "Next". If no firmware file is shown, you downloaded the wrong upgrade.



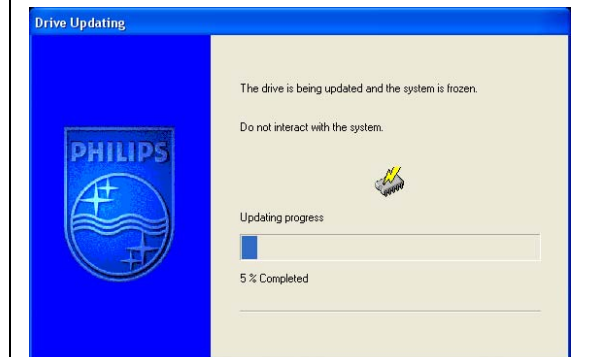
18 Check the settings and click "Next".



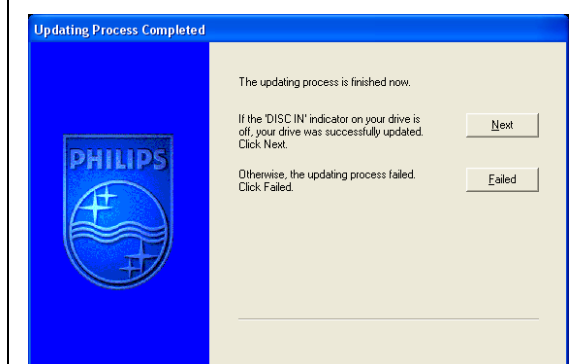
19 Remove any disc from the drive you wish to upgrade and click "Next".



20 The tool is now upgrading your drive. Do not interact with the system!



21 After upgrading, click "Next".



22 Click "Exit" Reboot your system!

