

Contents

Prefer words

1.1 Notice	2
1.2 Functional performances	2

Introduction operation

2.1 Layout and components	3
2.2 Power on& off	3
2.3 Battery ICON	3
2.4 Lock the player	4
3.1 Primary menu	4
3.2.1 Music Menu	5
3.2.2 Voice recorder	5
3.2.3 Deleting	5
3.2.4 System setting	6
3.3 Language setting	8
3.4 FM Tuner	8
3.5 USB Disk memory	10
● Connect with computer	10
● Notes of licking	10

Install drive-program at the system of WIN 98	11
---	----

Firmware Upgrading	13
--------------------------	----

Format the player	14
-------------------------	----

Addenda

● FAQ	14
● Specification parameters	15

Notice :

Please read the following items carefully before your operation:

- 1) Please be sure out of the wet place to use the Mp3.
- 2) Please do not near the hotter or under the sunshine.
- 3) Please do not open it repaired by yourself or components.
- 4) Please do not listen to the player by air in which places be forbidden to use the electric products.
- 5) Please be care of the player ,do not drop it under the follower so as to destroy it.
- 6) Please far from the chemic drugs ,such as benzene and thinner.

Security

In order to your security, so as to the following:

- ◇ please do not using the Mp3 when you driving or other things which need the concentration ,or it will interrupt you. And it is illegal in somewhere.
- ◇ Please turn down the volume of the earphone, and adjust it to the proper volume.
- ◇ If have any other abnormal, please turn down the volume at once and stop listening.

Functions and features**● Multi-color backlight**

the player offering seven colors to select .

● Supports variable Audio format files

Such as MP3, WMA, WMV, and WAV files .

● Recording and repeating

save the voice files by Mic as the format of WAV 和 ACT, you can select the start point and the end point.

● FM stereo tuner (Compatible with FM of the Player)

The player supports FM tuner with searching and storing the broadcasting stations automatically, ordinarily, 40 broadcasting available can be stored in the player.

● EQ menu

it contains Natural, Rock, POP, Classical, Jazz five kinds of EQ.

● Multifunction of playing

it contains Normal ,Repeat one, Repeat all, Random and Intro.

● Lyrics display synchronous

Supports lyrics, and displaying synchronously.

● Firmware Upgrading

Offering the latest software for upgrading

● As drive disk

it does not need the drive program at the system of Windows 2000 above.

●Setting time to Power off

you can set the time to power off the player automatically .

Notice

○ Firstly, thank you for using the MP3.

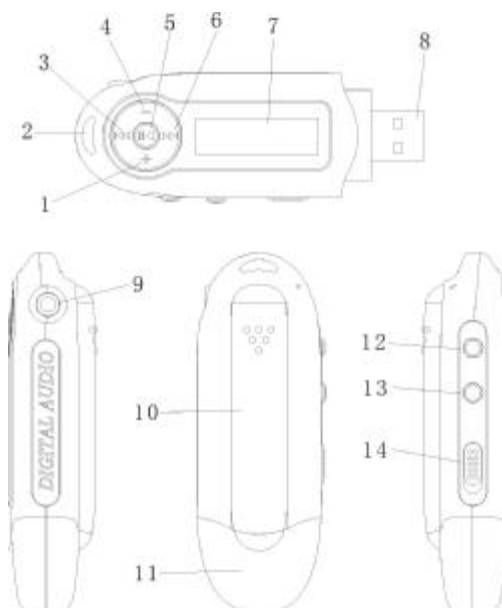
Before your operation, please read the operation manual carefully.

○ In order to the prime service, our contents will be changed in future. We will not give you the other notice for the mending of functions and features

If there is any difference between the setting and usage, please connect with us or visit our website.

2.1 Layout-design And Components

- 1) +: turn the volume up.
- 2) strap eyelet
- 3) ⏮: the last songs, the last directory;
- 4) -: turn the volume down;
- 5) ▶||: play, power on, pausing, and power off;
- 6) |: the next songs /the next directory;
- 7) LCD
- 8) USB interface
- 9) earphone hole;
- 10) the battery cover;
- 11) USB cover;
- 12) Menu key;
- 13) A-B key;
- 14) Lock;




2.2 Power on & off

I Please make sure there has the battery in the player, then long press ▶|| to play .

I In the status of stopping ,then long press ▶|| .

I Under the status of stopping, the system will be power off during the times you have set without any operation. the time you can set between 1-10 Minutes,if you select “display” ,then it will not power off automatically .

2.3 Battery ICON

 When the battery full of energy, then it will display as that. It will reduce gradually when the time is adding.

 As the display all complete, it means that has little energy of the battery.

2.4 Lock the player

Hold is used for locking the player, when you dialed it to right, then it will lock the player ,and it will have any response when you pressing any key , and it usually used for playing music .

3.1 Primary menu

- ✓ Enter the menu: Long pressing **Menu** to enter into , and pressing **⌂** and **:** to select all the menu, spot pressing **Menu** to enter the subsidiary menu. following display the music menu:



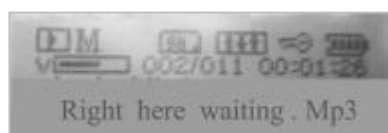
- ✓ Exit: Long pressing **Menu** to back on the primary menu as spot pressing **Menu** will back to the last subsidiary menu in any status.

3.2.1 Music Menu

It contains playing, pause, stop, volume adjusting, forward and backward, A-B repeat reading, and you can select the menu of cycle and EQ by yourself to adjust the music.

I The details of operational

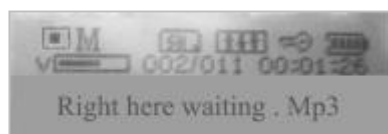
- a. Play: Enter into the status of music, and Spot pressing **Menu** to play the music , press **⌂** and **:** to select the songs:



- b. Pause: when the music playing, spot pressing **⏸** to pause:



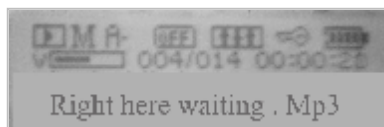
- c. Stop: Spot pressing **⏸** to stop and long pressing **⏸** again will power off.



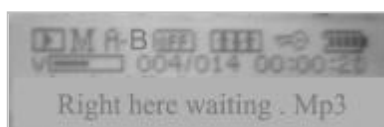
- d. VOLUME : Pressing (VOL) + &(VOL) - to adjust the volume when playing music.
- e. Forward and Backward: under the status of playing, then pressing to forward /backward.

I Repeat Reading

- 1) During the music playing, spot pressing **A-B**, then the start repeating point **A** is fixed.

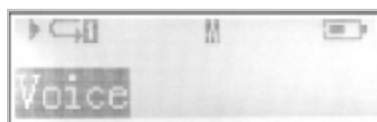


- 2) .Then spot pressing **A-B** again to make sure the end point **B**, then it will play from **A** to **B**; and pressing **A-B** to cancel repeating.

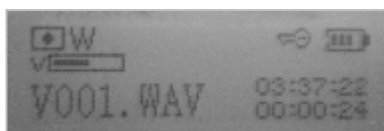


3.2.2 Voice Recorder

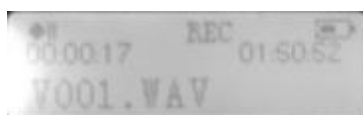
- 1) Power on the player, then long pressing **Menu** to enter the primary menu. Pressing Θ /: to select the status of **Record** then Spot pressing **Menu** to enter ,as the screen display as following :



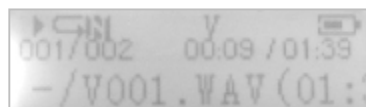
- 2) Spot pressing **Menu** to enter the status of voice recording, and begin to record ,the icon is **I** , displaying as following:



- 3)Pausing the recording, please spot pressing **II**,as following display;




- 4) when you finished record ,then pressing **Menu** again, then the icon is **n** ,and it will built the voice file automatically;
- 5) Play the recorder : please select voice in the primary menu ,and then spot pressing **Menu** to enter ,pressing **II** to play .



3.2.3 Deleting

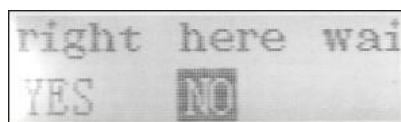
- Under the primary menu, pressing Θ /: to select the status of **delete** ,then spot pressing **Menu** to enter, the subsidiary menu as following:

Delete 4	+Music
	+Voice
	+Exit

Delete music /files

1) Spot pressing **Menu** to enter under the status of **delete** .


2) Pressing **Menu** to enter the status of deleting music /files, pressing 9/: to select which music/file you would like to delete, and pressing +/- to choice **YES** OR **NO**.



3) when you make sure, pressing **▶||** to carry the command, then the music/file will be delete.


3.2.4 System setting

Pressing 9/: Select system **SET** in the primary menu , the subsidiary menu as following:

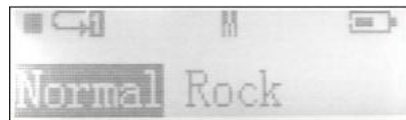
System setting 4	EQ
	Cycle
	CONTRAST
	POWER OFF
	BACK COLOR
	BACKLIGHT
	RECORD
	EXIT

EQ Mode

It contains 5 kinds of EQ, enter the primary menu by pressing **Menu**, the subsidiary menu as following show:

EQ menu 4	NATURAL
	ROCK
	JAZZ
	CLASIC
	POP

Under the status of pausing, long pressing **Menu**, select EQ menu and then pressing **Menu** to enter, pull up and down **Menu** to adjust, showing as following:



⌵ Play Mode

Under the primary menu, Pressing Θ /: to select cycle, then pressing **Menu** to enter, the subsidiary menu as following :

Play mode 4	NORMAL
	REPEAT ONE
	REP ALL
	Random
	INTRO

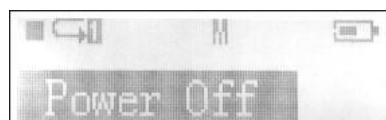
⌵ Contrast

Under the status of contrast, pressing Θ /: to adjust, and pressing **Menu** to exit .



⌵ Power off automatically

In the status of the Power off , pressing Θ and : to between 0 MIN (Disable) –10 MIN(1Min,2Min,5Min,10 Min) to make certain .



If you select **Disable**, then it will not power off automatically.

⌵ Backlight Color

Pressing **Menu** to enter into the backlight setting, it contains 7 kinds of back color for setting, such as red, green ,yellow, blue, Purple, cyan, and white:

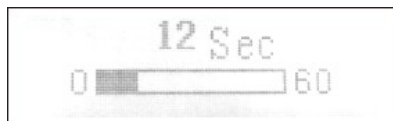


If you select the status of Random, it means that will brightly shining 7 kinds of back color.

⌵ Time of backlight


It is showing the time of the backlight, Pressing **Menu** to enter the Backlight, then pressing Θ /: to

select the Back light time between 0SEC –60SEC.




u Record Set

Pressing **Menu** to enter the subsidiary menu of system setting, then pull up/down **Menu** to select the status of record, it contains the following subsidiary menu:

RECPRD Set 4	Sou: Mic
	Enc: IMADP
	Cha: Mono
	Dev: Int
	Rate : 8000Hz 6
	EXIT

3.3 Language setting

It contains three kinds of language to select :

Language setting 4	Chinese GB
	Chinese PLIU
	English & KOR
	English & JAP
	English & EUR
	English & GBK
	English & BIG5

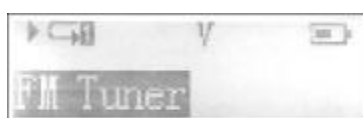
u Firmware

It will show you the information of firmware.

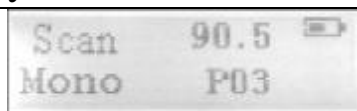


3.4 FM Tuner (It is compatible with FM)

- 1). Press **Menu** to enter into the Main menu, and then press **⏮** & **⏭** to select FM tuner, spot pressing **Menu** and then entry the menu of FM.



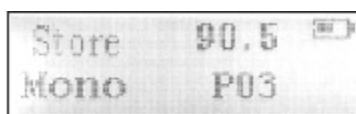
- 2) Under the status of **FM** Tuner, spot pressing **▶** to select **Search** , pressing **Menu** begin to searching the Broadcasting station and will be saved automatically.



- 3) Pressing **▶||** to select Radio, and then pressing **9/:** to select the Broadcasting you have been saved.and pressing **▶||** to play.



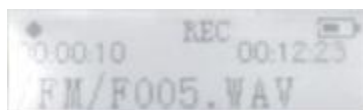
- 4) . Select SAVE, then it will save in the player, as the voice files be stored..



● .FM built –in recorder

Under the status of playing the FM program ,it can be record the program at the same time ,and saving

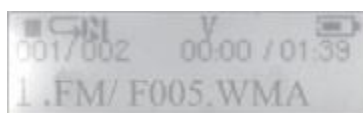
- 1) During the Fm playing ,Spot pressing **A-B**,and it will begin to record ,the display as following :



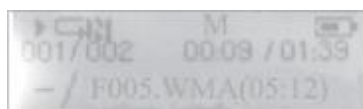
- 2) Pausing the record, spot pressing **▶||** as following icon display:



- 3) When you finished the record ,and spot pressing **A-B**



- 4)Playing: in the status of voice ,and then select the files and then play .



3.5 USB Disk function

It has the function of movable disk ,and you can copy,paste,delete any files easily . Please don't connect with the computer if you have not using the player.

- Please connect with the computer correctly and then installation , then you can download,copy,or delete files .
 - 1) MP3、WMA、and music files only can be download in the directory, please do not pull out the USB extend line ,so as will be damaged the player.
 - 2) Please copy and paste the standard files of MP3 and WMA ;
- when you begin to transmit data ,please notice the player will display “ready”.
- If the player will not work normally ,please take out the battery and put it into

again. then try to connect with the computer.

- The player support the music files in MP3,WMA and the voice file in ADPCM. If you hope the player store the other format of files, please built a new directory In the disk, and take the files into the directory.
- If it is not the Mp3 or WMA songs, please transmit the format which the player supported.

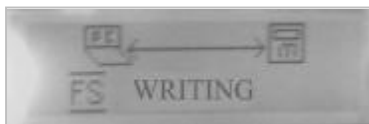
● Connect with computer

Windows98 Se It should be install the drive program at the system of Windowns98 SE below, and then you can connect with the computer, and the step of connecting as show below:

- 1) In the first time connection, it will check the new hardware automatically.
- 2) when you connection ,the player enter into the status of USB ,display as following :



- 3) There is a Moveable disk will be appear in the My computer. you will check it .
- 4) When you transmit data from the computer, then the player will showing as following .



● Notice proceeding of connect with PC

- 1) When the player connect with the computer, so please do not pull out USB,otherwise it will lead to data be damaged or lost.
- 2) Connect with the computer, but will be intermit during the data transimiting, please checking the below:
 - a. Please exit the program and connection, try again.
 - b. Please connect with the other computer at the system of WIN2000 或 WIN XP.
- 3) The computer will stagnancy or does not work ,it will cause the data lost ,so the user should make sure the stability of the computer.

Install drive-program at the system of WIN 98

Drive program installation is necessary at the system of Windows 98SE below, we suggest that also installation the program at the system Windows2000、 Windows Me、 Windows Xp。

- 1) If the system is Windows NT、 Windows Me, then the name of the user must be select **administrator**.
- 2) Take the disc into the CD-ROM.
- 3) Please copy the content in the hard disc for the later used before the installation.
- 4) Open the disk, and begin to installation, it will showing the picture as following .



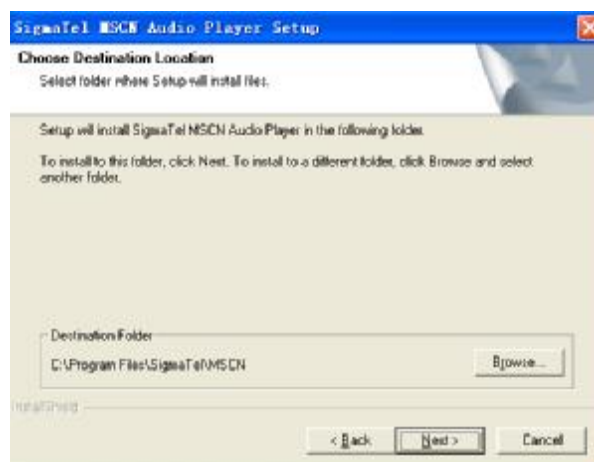
- 5) When the process is finished ,it will pop-up the picture as below, press next to continue:



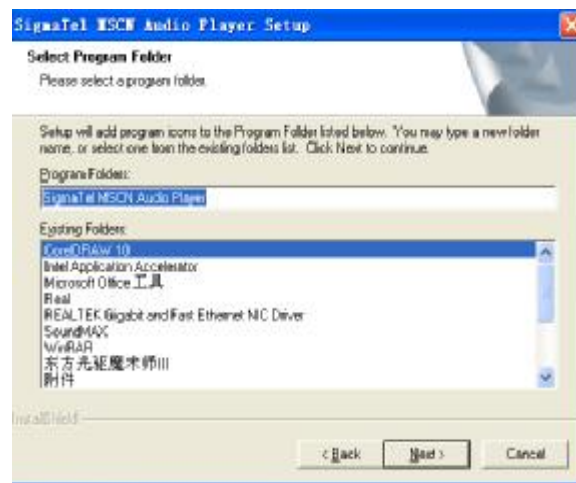
- 6) At the picture , it will showing the agreement ,so pressing YES to continue:



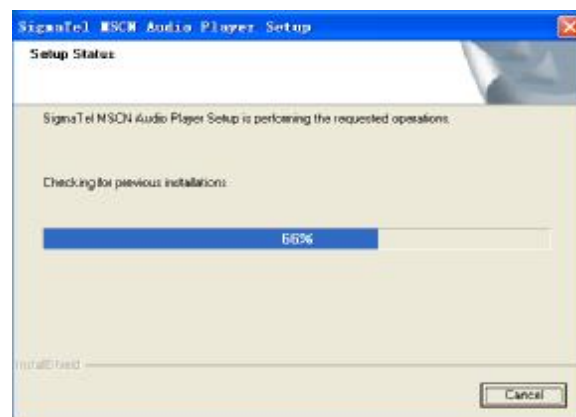
- 7) .when you agreement ,then it will continue to pop-up the following :



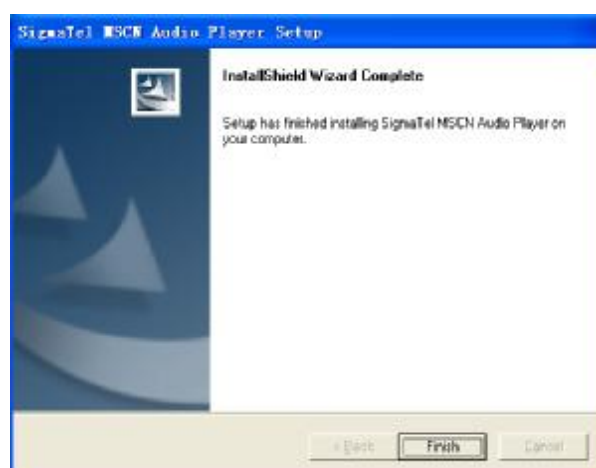
- 8) .Pressing next to continue ,and will showing the place to install :



9) when you select the place ,then continue by press NEXT, it will showing the progress of installation:



10) All is finished, pop-up the picture as following :

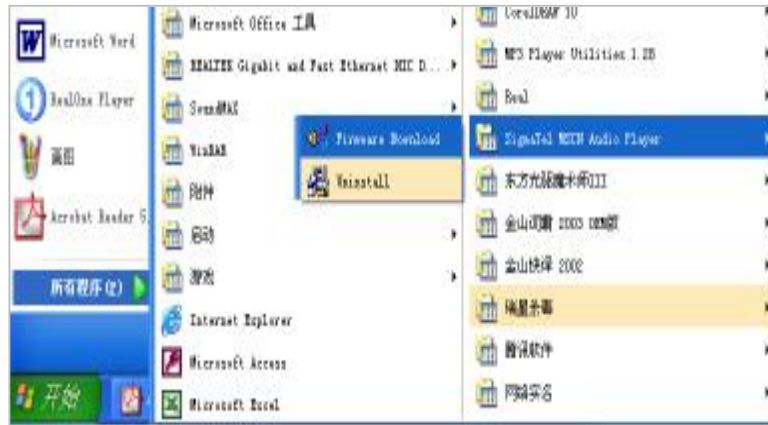


Firmware upgrading

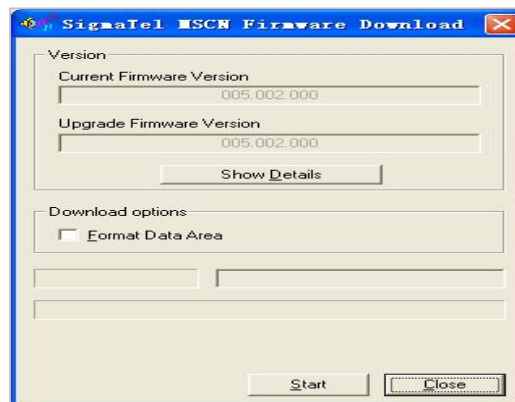
1. If your player does not work normally, although installed the battery again, then

please following the step as below will be recover your system, and we suggest that you should take the system at Win2000, Win NT, WinXP.

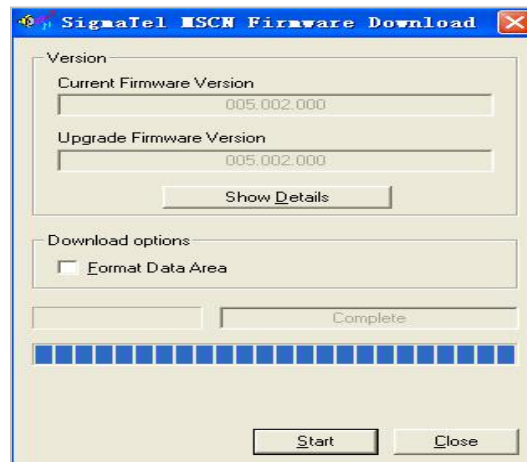
2. you should installed the drive program at the system of Windows98 below.
3. You should make sure the lock be opened when upgrading and recovering .
4. Carry out **Sigmatel IMSCN Audio Player /firmware download** of the **Start program**:



5. Pressing **Firmware download**, then it will showing as following ,and if you select the **format Data Area** ,then it will format the player and delete all the data of the player, pressing start begin to format:



6. Pressing “start”, begin to upgrade, as following the progress ,when it finished ,closed it :



Format Player:

Correct link to the computer , and then copy the files of the player ,for all the files in the player will be delete after formatted

- I Firstly ,please refer to the Firmware upgrading to format the player.
- I The software offered by the computer can direct format the player, the operation as format HD.(Please select FAT instead of FAT32 and NTFS in the system option ,otherwise the MP3 can not player normally .

FAQ

- I There is no respond during the status of power off ,
Please check if it is be locked by the Hold, and turn the Hold to that.
- I Power off automatically after power on.
It must be lack of electricity, so please changing another battery.
- I Without any sounds in playing.
Firstly, please checking the volume, adjust it in the compatible sounds, the other reason must be without voice files in the player.
- I It can not playing the files of MP3
It will different between the compressed format and compressed tools, being the variable compressed tools. The player only support the standard files of MP3 and WMA, but not the piratical format.
- I Why some of songs have no the time display
We take VBR files by compressed format ,it will have no time display during the music playing except VBR. You can take the settled velocity to compress it again .
- I When link with the computer, but without the new disk showing
 - 1) The main board do not support USB interface or it colosed,so you should upgrade the main board drive program and enter it to set the CMOS again.
 - 2) Without drive program or the files you have installed be damaged ,please delete the original program and install again.
Your computer have installed the drive program referred of Sigmatel before ,please delete the OEM0—6.1NF and PNF files under the Windows/NF manually.
- I It could not read &writing normally when connects with the PC.
It must be worse compatibility of the computer, please try in another computer.
- I The player does not work sometimes.
please take out the battery ,and put it in again.
- I The memory of the moveable disk is not as describe.
Being the system will occupy some of the space ,and it will not display .

Specifications

Memory	128M/256M
Record format	ADPCM
Time of recording	About 8-16 hours
Playing time	About 8 hours
Power	3M W * 2
USB info	USB 2.0
MP3 compressing rate	32Kbps-320Kbps\32Kbps-192Kbps
Battery	One AAA alkaline battery
weight	About 25g (without the battery)
volume	87.5*30*20.5MM