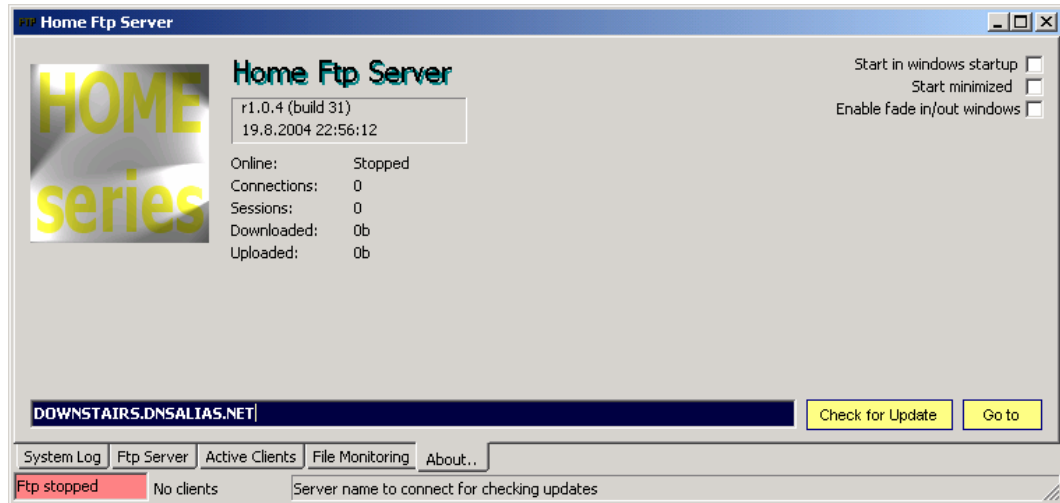


Home Ftp Server

Last updated: 23.08.2004, Ari Pikivirta

Introduction

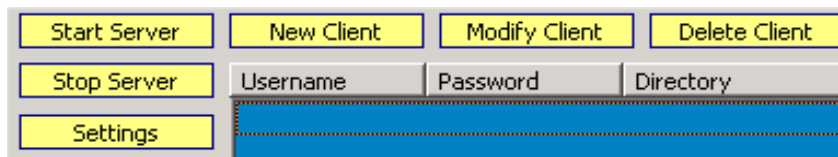


Home Ftp Server is a freeware Windows ftp server with lots of features. To mention some of home ftp server features: Virtual directories, File monitoring, Active clients monitoring, real-time activity logging, Web interface, etc.

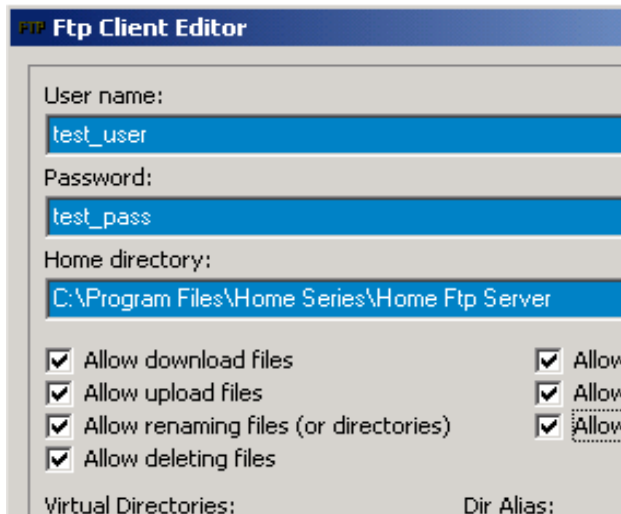
First steps to get it running

After installation is completed the home ftp server application is already ready to run as ftp server on your local computer. To test out how easy this really was, here is some step-by-step info to complete testing:

1. Run Home Ftp Server
2. Switch to "Ftp server" tab, by clicking the tab at the bottom of the window appeared.

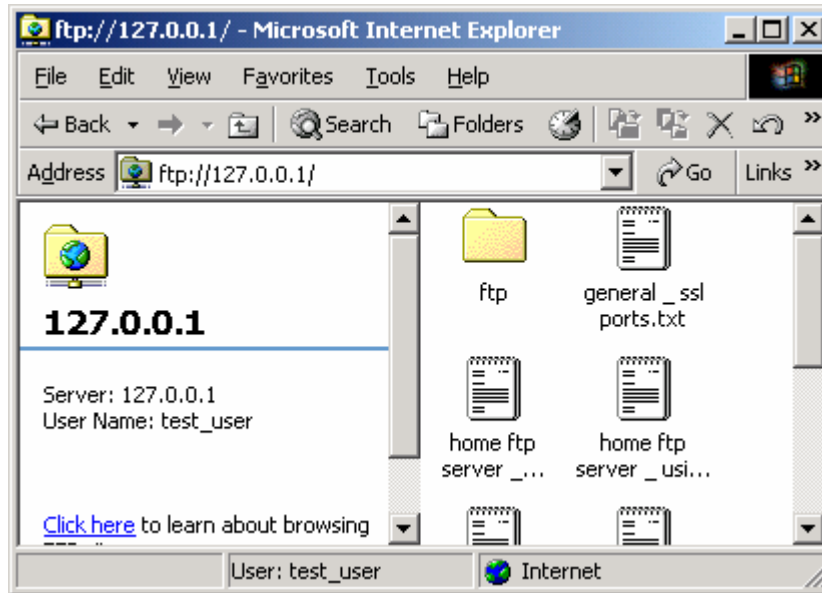


3. Then click "Start server" button. Edit box at bottom left corner turns to green, indicating that your ftp server is now running.
4. Add new test user by clicking "New client" button.



5. Fill in some values that you remember for user name and password for testing purposes. Accept default directory (which is installation directory of home ftp server).
6. Next run your default Ftp Client or if you don't have one run Internet Explorer (must be rev. 5 or above).
7. Point the host address to your local computer address, which in all cases is always <ftp://127.0.0.1>. If you have to define user name and password already, fill out those before connecting. If you are using IE, then you will be prompted for username and password.

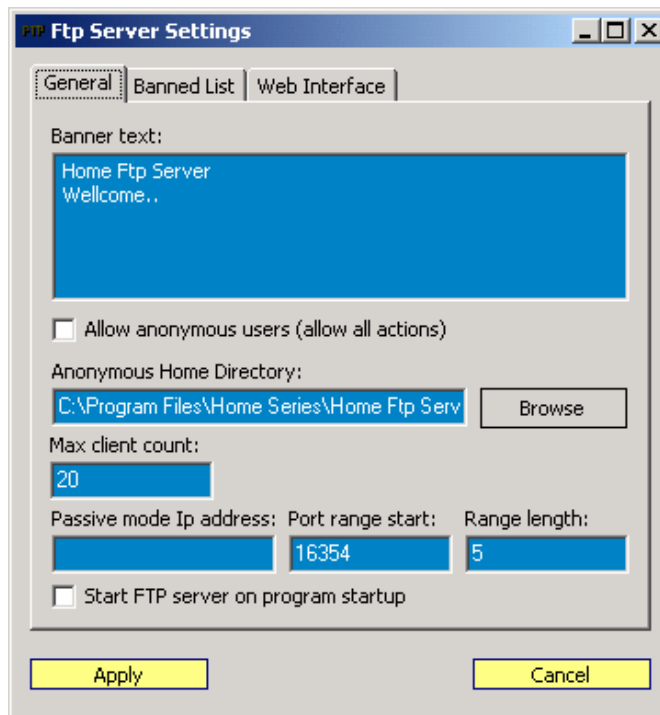
- Now you should be connected to your ftp server and see contents of home ftp server installation folder.



- Next to make sure this was served by your new ftp server, open up the home ftp server window and change to tab system log. There should now read that you have connected to ftp server and authenticated as user name you defined above. Also log is showing home directory that was defined for this user.

```
23.8.2004 18:41:39 FTP> 127.0.0.1:1034 - authenticated as test_user (home = C:\Program Files\Home S
23.8.2004 18:41:39 FTP> 127.0.0.1:1034 - connected
23.8.2004 18:41:34 FTP> 127.0.0.1, anonymous - disconnected
23.8.2004 18:41:34 FTP> 127.0.0.1:1033 - failed to authenticate (user = anonymous, pass = IEUser@)
23.8.2004 18:41:34 FTP> 127.0.0.1:1033 - connected
```

Settings, Defaults



Banner text:

Banner text is the text you will see when logging in to your ftp server. You can have here the latest information you are serving for you clients – and also normally this contains also the support information.

Allow anonymous users:

Default is unchecked. If checked all users that connects to your ftp server will be accepted to browse folder defined in box below (Anonymous home directory).

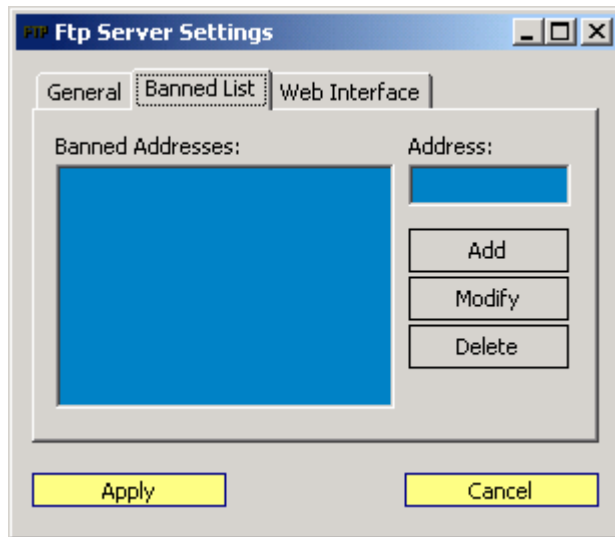
Anonymous Home Directory:

All anonymous clients are redirected to this folder if enabled. By default this folder is set to point to ftp directory in your home ftp server installation folder. Any client cannot traverse up from set home directory.

Start Ftp server on program startup:

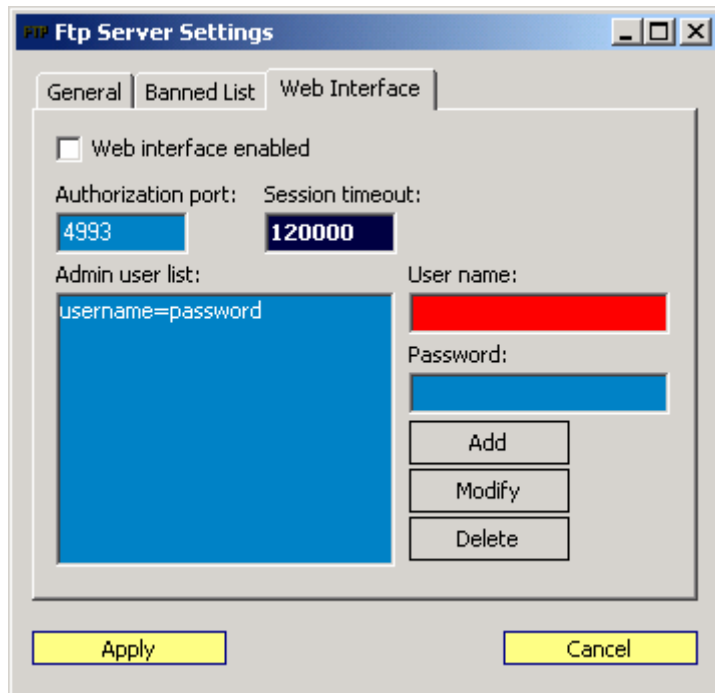
If checked, ftp server is automatically started on program startup, otherwise you have to click on start server button to have ftp server started.

Settings, Banned List



To disable some IP accessing even anonymous folder of your ftp server, add the IP into this list. When IP listed here tries to connect it is immediately disconnected before it's request is handled.

Settings, Web Interface



If you have web interface enabled, ftp server runs also http server at defined port that allows you to add, modify and delete ftp members remotely.

Web interface enabled:

If checked, also http server is started on ftp server startup. Http server is started at port defined in authorization port edit box.

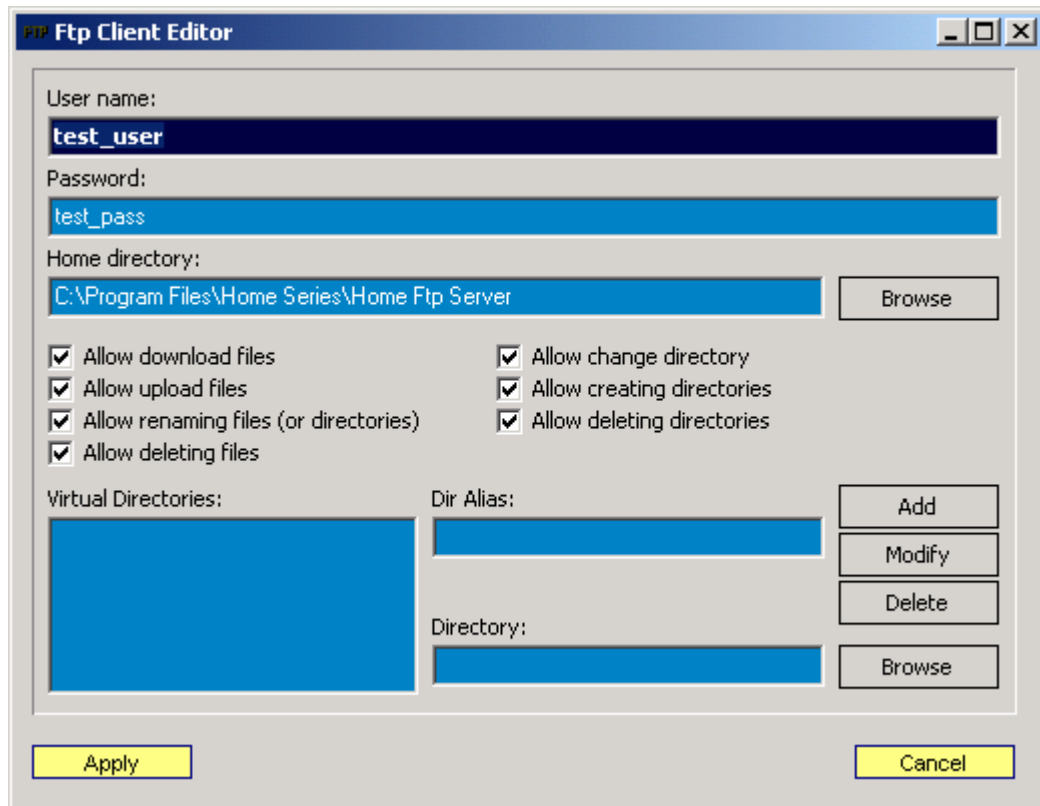
Authorization port:

Web interface enable server port that is put listening on ftp server startup if web interface is enabled. By default this port is set to 4993. To try connecting to this web interface, navigate your default internet browser to <http://127.0.0.1:4993>.

User name and password:

User name and password that is allowed to add, modify or remove ftp members from your ftp server. These are case sensitive.

Add or Modify Client



The screenshot shows the 'Ftp Client Editor' dialog box. It has a title bar with the text 'Ftp Client Editor' and standard window controls. The dialog is divided into several sections. At the top, there are text boxes for 'User name:' (containing 'test_user') and 'Password:' (containing 'test_pass'). Below these is a 'Home directory:' section with a text box containing 'C:\Program Files\Home Series\Home Ftp Server' and a 'Browse' button. The next section contains eight checkboxes arranged in two columns, all of which are checked: 'Allow download files', 'Allow upload files', 'Allow renaming files (or directories)', 'Allow deleting files', 'Allow change directory', 'Allow creating directories', and 'Allow deleting directories'. Below the checkboxes is a 'Virtual Directories:' section with a large blue rectangular area. To the right of this area are two text boxes: 'Dir Alias:' and 'Directory:'. To the right of these text boxes are four buttons: 'Add', 'Modify', 'Delete', and 'Browse'. At the bottom of the dialog are two buttons: 'Apply' and 'Cancel'.

Allow download files:

If checked, user is allowed to download files from your ftp server.

Allow upload files:

If checked, user is allowed to upload files to your ftp server.

Allow renaming files (or directories):

If checked, user is allowed to rename files or directories on your ftp server.

Allow deleting files:

If checked, user is allowed to delete files from your ftp server.

Allow change directory:

If checked, user is allowed to alter directory from home directory defined. Even this is checked, user is unable to traverse up from set home directory.

Allow creating directories:

If checked, user is allowed to create directories.

Allow deleting directories:

If checked, user is allowed to delete directories located in his home directory.

Virtual directories:

These directories are virtually added into user's home directory. Dir alias is the directory name user sees added in his home directory. When user enters into that virtual directory the server really browses the directory set behind that alias directory.



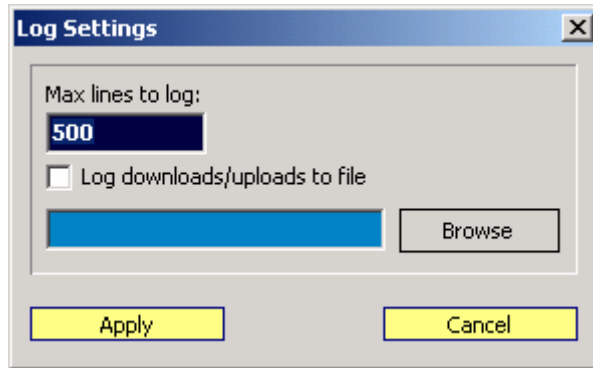
Virtual Directories:
VirtualDirectory=D:\

For example, if you have add virtual directory with alias "VirtualDirectory" pointing into drive D:\ the user sees his home directory as follows:



Name	Size	Type
ftp		File Folder
VirtualDirectory		File Folder
ftplotsettings.lst	52 bytes	LST File

Log Settings



Log settings window can be found on system log tab. Log settings contains the settings how different items are logged while server is running.

Max log lines to display:

Visible log book will contain maximum this amount of lines. All lines above this count will be just erased. Default is set to 500 lines.

Log downloads to file:

If checked all files served will be logged into the file defined into edit box below. Select file before checking this checkbox by clicking the browse button on right.